

LOWER FLOOR PLAN

330 SQ. FT. FINISHED LOWER FLOOR AREA INCLUDING STAIRS
 360 SQ. FT. FINISHED MICRO SUITE FLOOR AREA
 690 SQ. FT. TOTAL LOWER FLOOR AREA



the cottages
ON OSOYOOO LAKE

unit number:
000

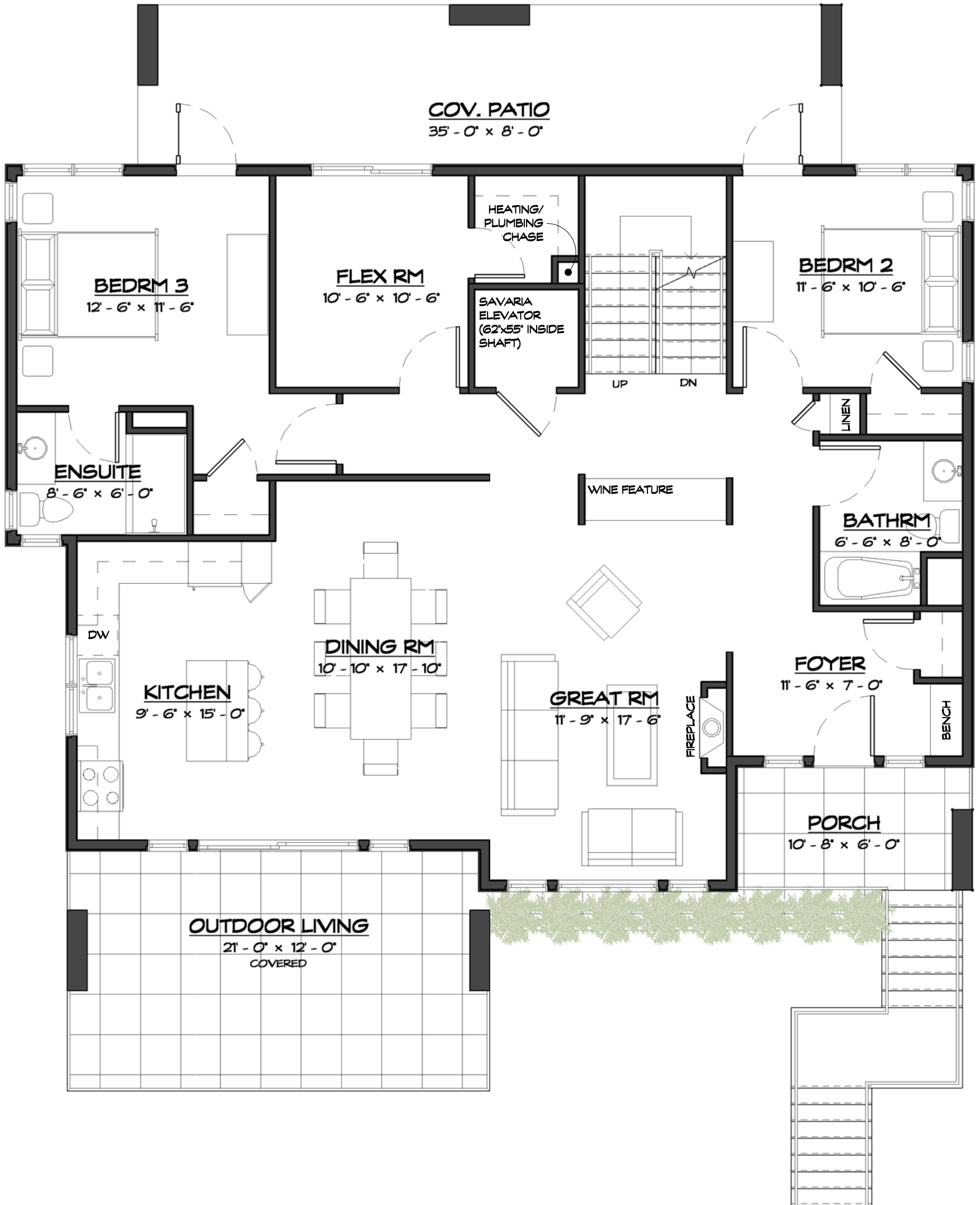
unit style:
Meritage
drawings prepared by:
Precision Building Design Associates
Chilliwack, B.C. (604) 792-0826

color scheme:
Scheme -
date:
July 13, 2017
scale:
3/16" = 1'-0"



This home will be designed and built to comply with BC Building Code 2006 edition

-Drawings are subject to change without notice. The developer reserves the to make modifications to the drawings at their sole discretion in accordance with building code guidelines and to maintain the high quality of the homes.
 -Window sizes are subject to change from site to site based on site limiting distance calculations.
 -Drawings to be read in conjunction with structural drawings by VanDenBrink Engineering LTD.
 -These drawings are based on the original drawings and details created by Rositch Hemphill Architects, and have been subsequently modified and/or reformatted by Precision Building Design Associates Ltd.



MAIN FLOOR PLAN

690 SQ. FT. TOTAL LOWER FLOOR AREA (INCLUDING MICRO SUITE)
 1565 SQ. FT. MAIN FLOOR AREA INCLUDING STAIRS (500 SQ. FT. PATIO)
 835 SQ. FT. UPPER FLOOR AREA EXCLUDING STAIRS (740 SQ. FT. PATIO)
 3090 SQ. FT. TOTAL FLOOR AREA (1240 SQ. FT. TOTAL PATIO)



the cottages
 ON OSOYOOO LAKE

unit number:
000

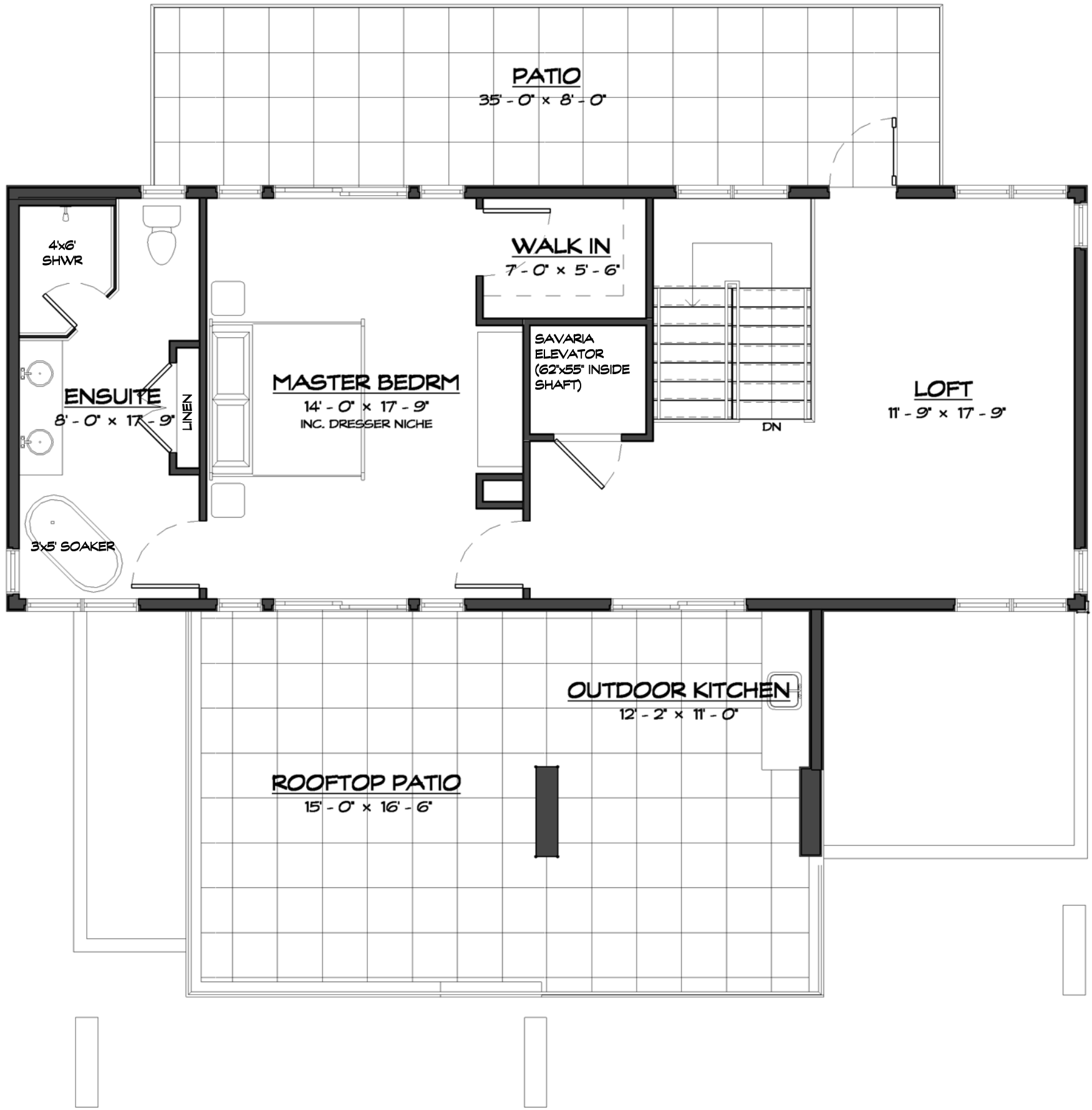
unit style:
Meritage
 drawings prepared by:
 Precision Building Design Associates
 Chilliwack, B.C. (604) 792-0826

color scheme:
Scheme -
 date:
 July 13, 2017
 scale:
 3/16" = 1'-0"



This home will be designed and built to comply with BC Building Code 2006 edition

-Drawings are subject to change without notice. The developer reserves the to make modifications to the drawings at their sole discretion in accordance with building code guidelines and to maintain the high quality of the homes.
 -Window sizes are subject to change from site to site based on site limiting distance calculations.
 -Drawings to be read in conjunction with structural drawings by VanDenBrink Engineering LTD.
 -These drawings are based on the original drawings and details created by Rositch Hemphill Architects, and have been subsequently modified and/or reformatted by Precision Building Design Associates Ltd.



UPPER FLOOR PLAN

835 SQ. FT. UPPER FLOOR AREA EXCLUDING STAIRS (740 SQ. FT. PATIO)



unit number:
000

unit style:
Meritage
drawings prepared by:
Precision Building Design Associates
Chilliwack, B.C. (604) 792-0826

color scheme:
Scheme -
date:
July 13, 2017
scale:
3/16" = 1'-0"



-Drawings are subject to change without notice. The developer reserves the to make modifications to the drawings at their sole discretion in accordance with building code guidelines and to maintain the high quality of the homes.
-Window sizes are subject to change from site to site based on site limiting distance calculations.
-Drawings to be read in conjunction with structural drawings by VanDenBrink Engineering LTD.
-These drawings are based on the original drawings and details created by Rositch Hemphill Architects, and have been subsequently modified and/or reformatted by Precision Building Design Associates Ltd.

This home will be designed and built to comply with BC Building Code 2006 edition



the cottages
ON OSOYOOO LAKE

unit number:
000

unit style:
Meritage
drawings prepared by:
Precision Building Design Associates
Chilliwack, B.C. (604) 792-0826

color scheme:
Scheme -
date:
July 13, 2017
scale:



This home will be designed and built to comply with BC Building Code 2006 edition

-Drawings are subject to change without notice. The developer reserves the to make modifications to the drawings at their sole discretion in accordance with building code guidelines and to maintain the high quality of the homes.
-Window sizes are subject to change from site to site based on site limiting distance calculations.
-Drawings to be read in conjunction with structural drawings by VanDenBrink Engineering LTD.
-These drawings are based on the original drawings and details created by Rositch Hemphill Architects, and have been subsequently modified and/or reformatted by Precision Building Design Associates Ltd.