



FRONT ELEVATION



REAR ELEVATION

These plans are intended for illustration purposes. Detailed working drawings will be provided to subcontractors and suppliers for construction purposes. The developer reserves the right to make changes to the plans and specifications at their discretion. Refer to colour boards for actual exterior colors. E and O E



the cottages
ON OSOYOOO LAKE

unit number:
000

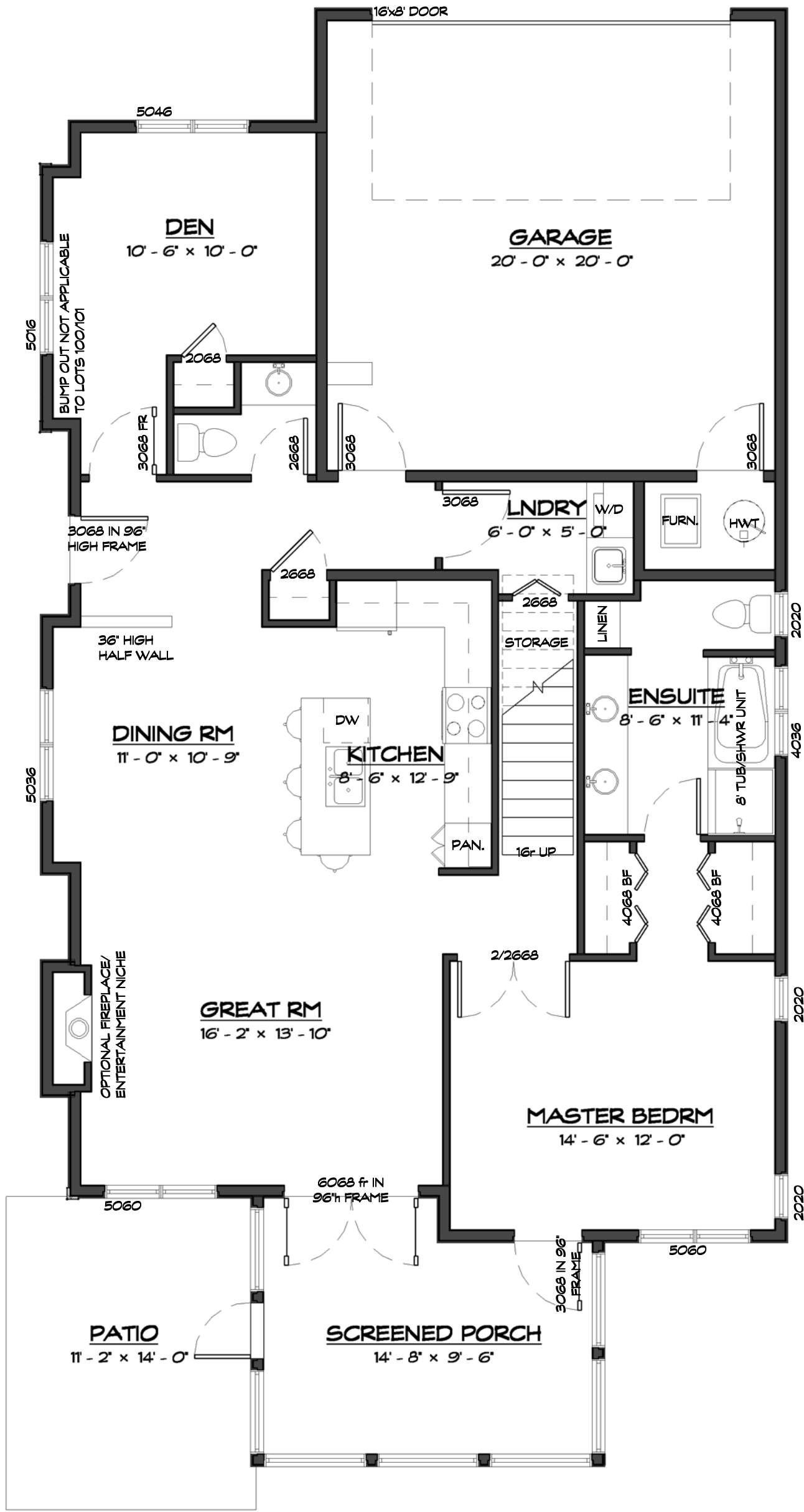
unit style:
Sauvignon
drawings prepared by:
Precision Building Design Associates
Chilliwack, B.C. (604) 792-0826

color scheme:
Scheme -
date:
April 24, 2015
scale:
3/16" = 1'-0"



This home will be designed and built to comply with BC Building Code 2006 edition

-Drawings are subject to change without notice. The developer reserves the right to make modifications to the drawings at their sole discretion in accordance with building code guidelines and to maintain the high quality of the homes.
-Window sizes are subject to change from site to site based on site limiting distance calculations.
-Drawings to be read in conjunction with structural drawings by VanDenBrink Engineering LTD.
-These drawings are based on the original drawings and details created by Rositch Hemphill Architects, and have been subsequently modified and/or reformatted by Precision Building Design Associates Ltd.



MAIN FLOOR PLAN

1285 SQ. FT. MAIN FLOOR AREA INCLUDING STAIRS/EXCLUDING SCREENED PORCH
 990 SQ. FT. LOFT FLOOR AREA EXCLUDING STAIRS
 2275 SQ. FT. TOTAL FLOOR AREA



the cottages
 ON OSOYOOO LAKE

unit number:
000

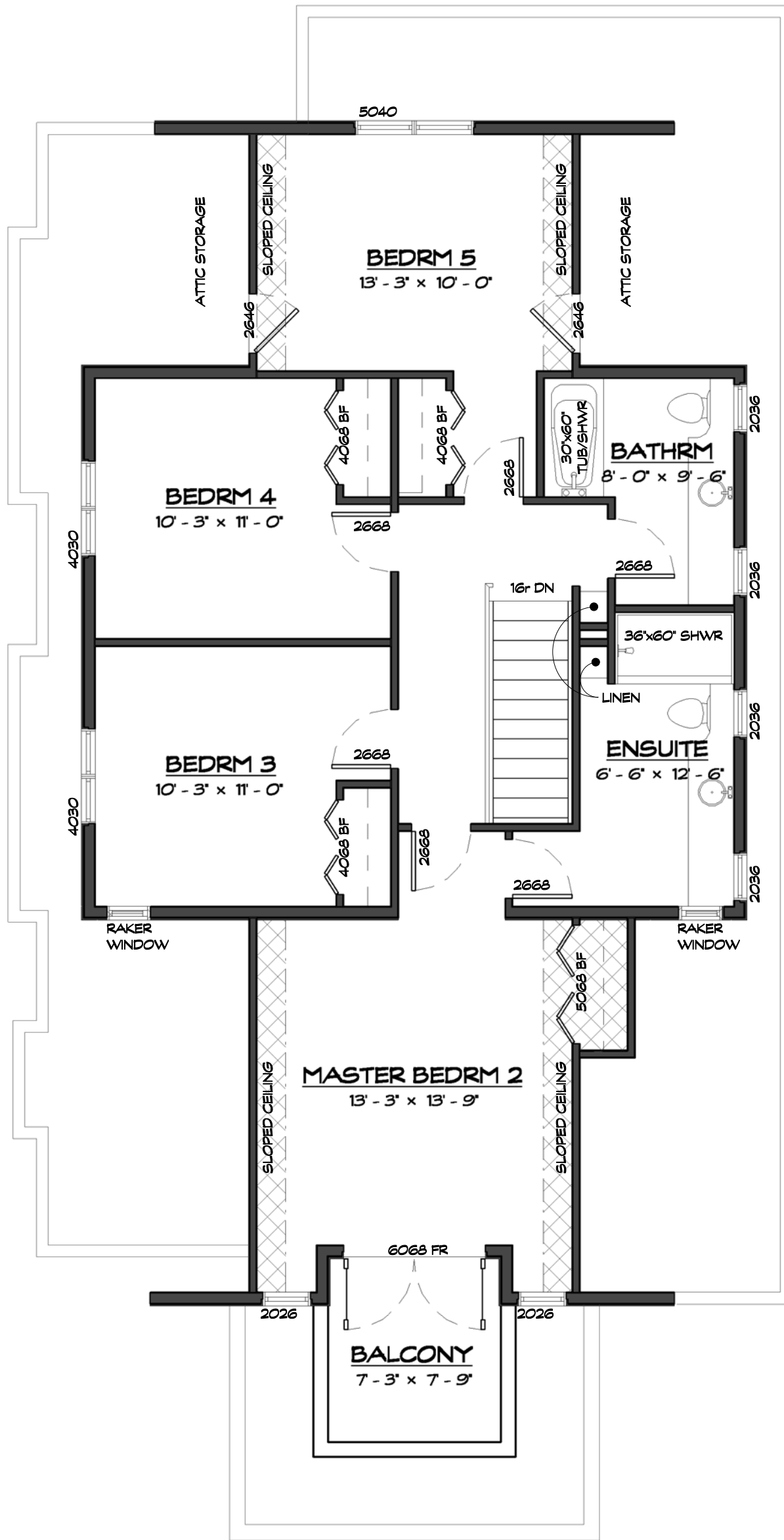
unit style:
Sauvignon
 drawings prepared by:
 Precision Building Design Associates
 Chilliwack, B.C. (604) 792-0826

color scheme:
 Scheme -
 date:
 April 24, 2015
 scale:
 3/16" = 1'-0"



van maren
 GROUP OF COMPANIES

-Drawings are subject to change without notice. The developer reserves the to make modifications to the drawings at their sole discretion in accordance with building code guidelines and to maintain the high quality of the homes.
 -Window sizes are subject to change from site to site based on site limiting distance calculations.
 -Drawings to be read in conjunction with structural drawings by VanDenBrink Engineering LTD.
 -These drawings are based on the original drawings and details created by Rositch Hemphill Architects, and have been subsequently modified and/or reformatted by Precision Building Design Associates Ltd.



LOFT FLOOR PLAN

990 SQ. FT. LOFT FLOOR AREA EXCLUDING STAIRS



the cottages
ON OSOYOOO LAKE

unit number:

000

unit style:

Sauvignon

drawings prepared by:
Precision Building Design Associates
Chilliwack, B.C. (604) 792-0826

color scheme:

Scheme -

date:

April 24, 2015

scale:

3/16" = 1'-0"



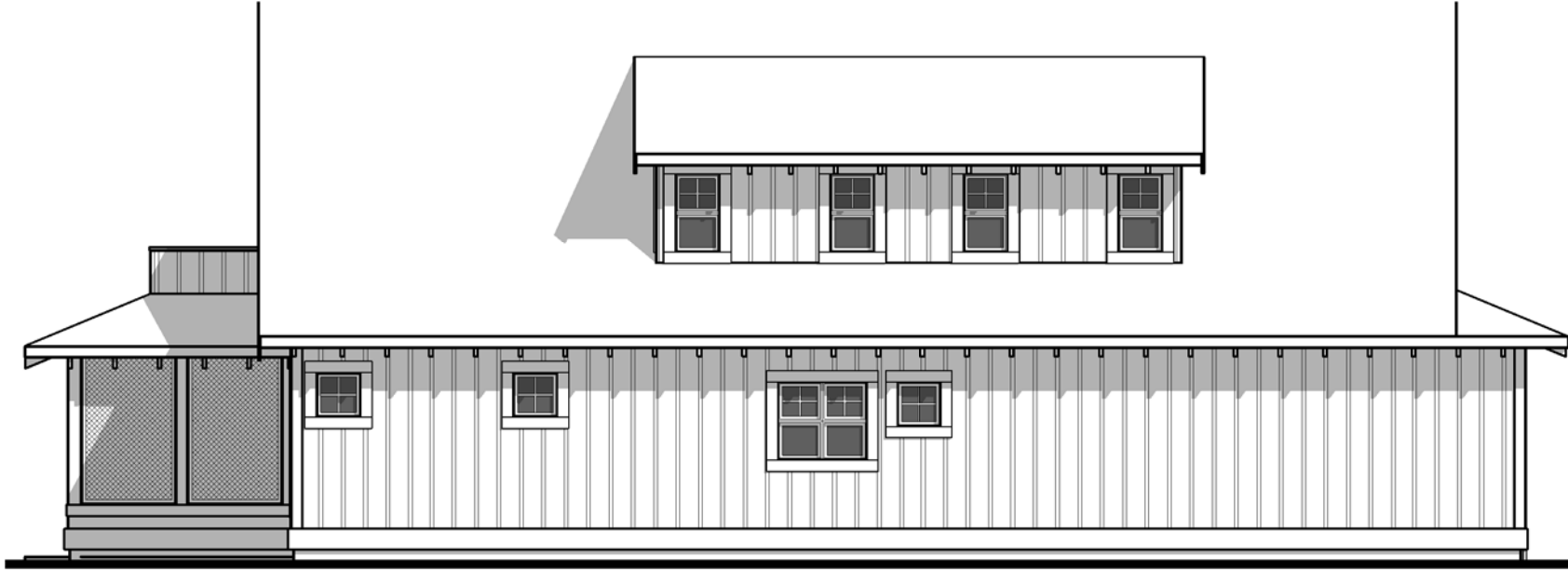
van maren
GROUP OF COMPANIES

-Drawings are subject to change without notice. The developer reserves the to make modifications to the drawings at their sole discretion in accordance with building code guidelines and to maintain the high quality of the homes.
-Window sizes are subject to change from site to site based on site limiting distance calculations.
-Drawings to be read in conjunction with structural drawings by VanDenBrink Engineering LTD.
-These drawings are based on the original drawings and details created by Rositch Hemphill Architects, and have been subsequently modified and/or reformatted by Precision Building Design Associates Ltd.

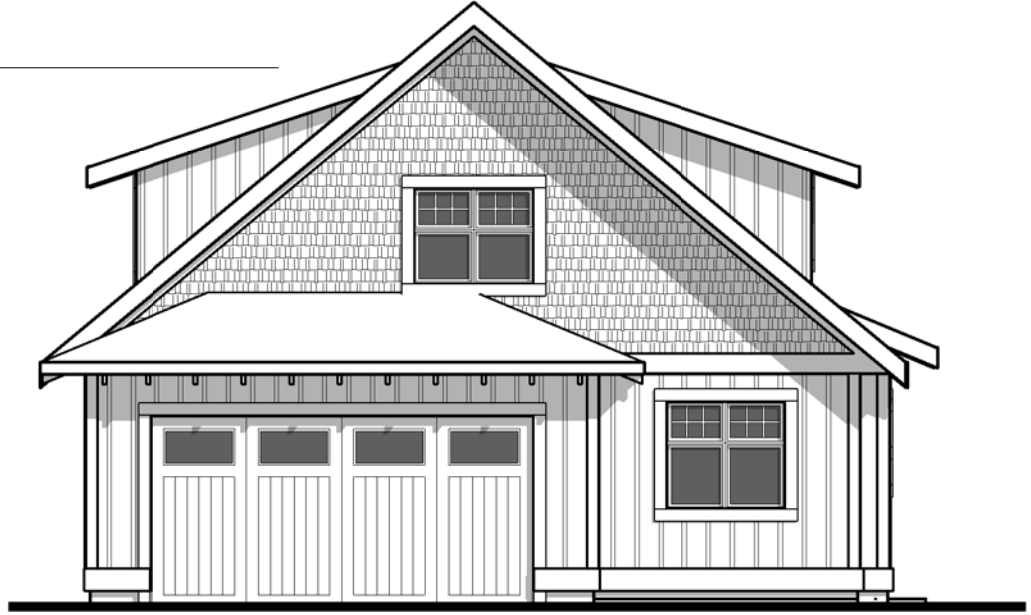
This home will be designed and built to comply with BC Building Code 2006 edition



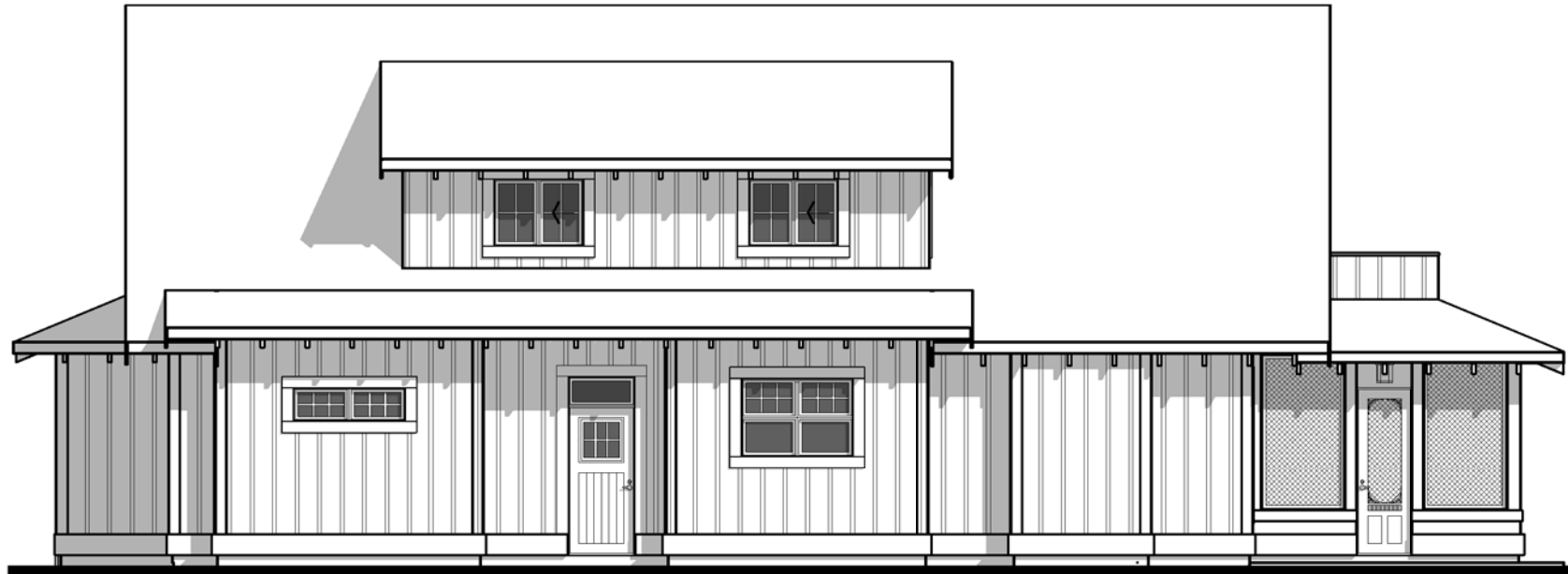
FRONT ELEVATION



RH SIDE ELEVATION



REAR ELEVATION



LH SIDE ELEVATION



the cottages
ON OSOYOOO LAKE

unit number:

000

unit style:

Sauvignon

drawings prepared by:
Precision Building Design Associates
Chilliwack, B.C. (604) 792-0826

color scheme:

Scheme -

date:

April 24, 2015

scale:

1/8" = 1'-0"



van maren
GROUP OF COMPANIES

-Drawings are subject to change without notice. The developer reserves the to make modifications to the drawings at their sole discretion in accordance with building code guidelines and to maintain the high quality of the homes.
-Window sizes are subject to change from site to site based on site limiting distance calculations.
-Drawings to be read in conjunction with structural drawings by VanDenBrink Engineering LTD.
-These drawings are based on the original drawings and details created by Rositch Hemphill Architects, and have been subsequently modified and/or reformatted by Precision Building Design Associates Ltd.

This home will be designed and built to comply with BC Building Code 2006 edition