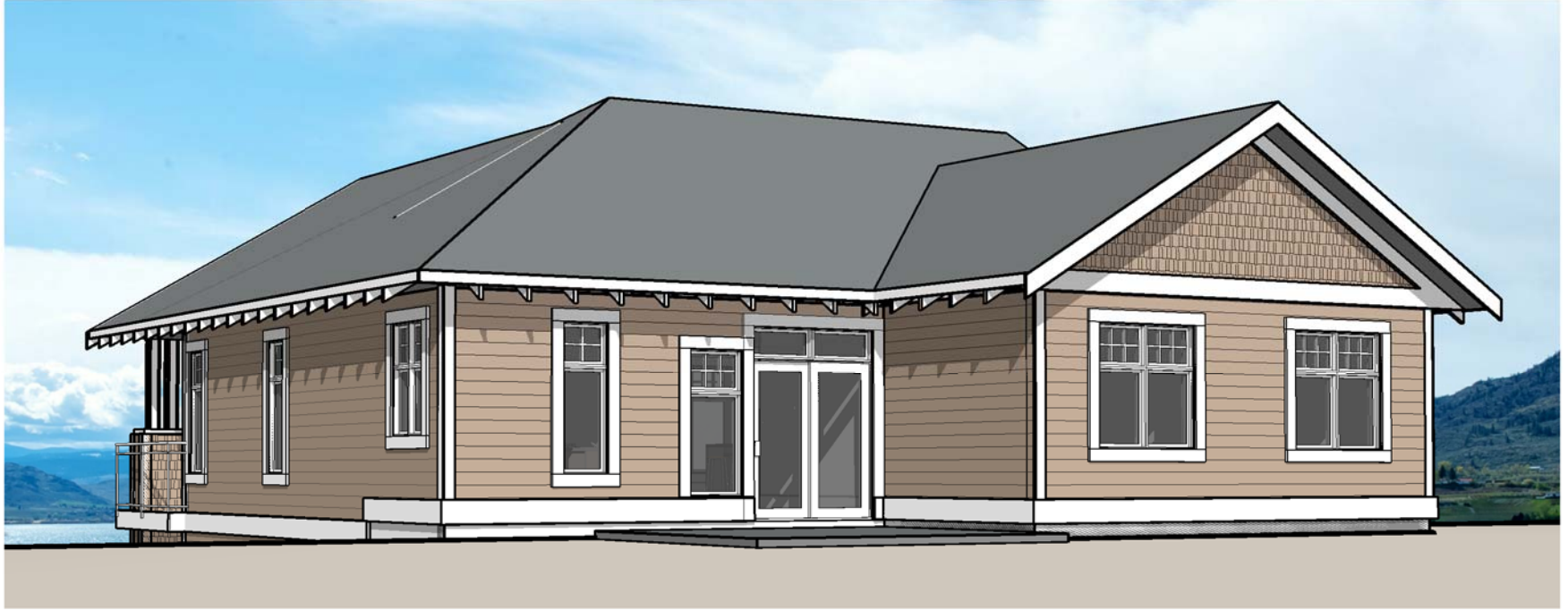




**FRONT ELEVATION**



**REAR ELEVATION**

These plans are intended for illustration purposes. Detailed working drawings will be provided to subcontractors and suppliers for construction purposes. The developer reserves the right to make changes to the plans and specifications at their discretion. Refer to colour boards for actual exterior colors. E and O E



**the cottages**  
ON OSOYOOO LAKE

unit number:  
**000**

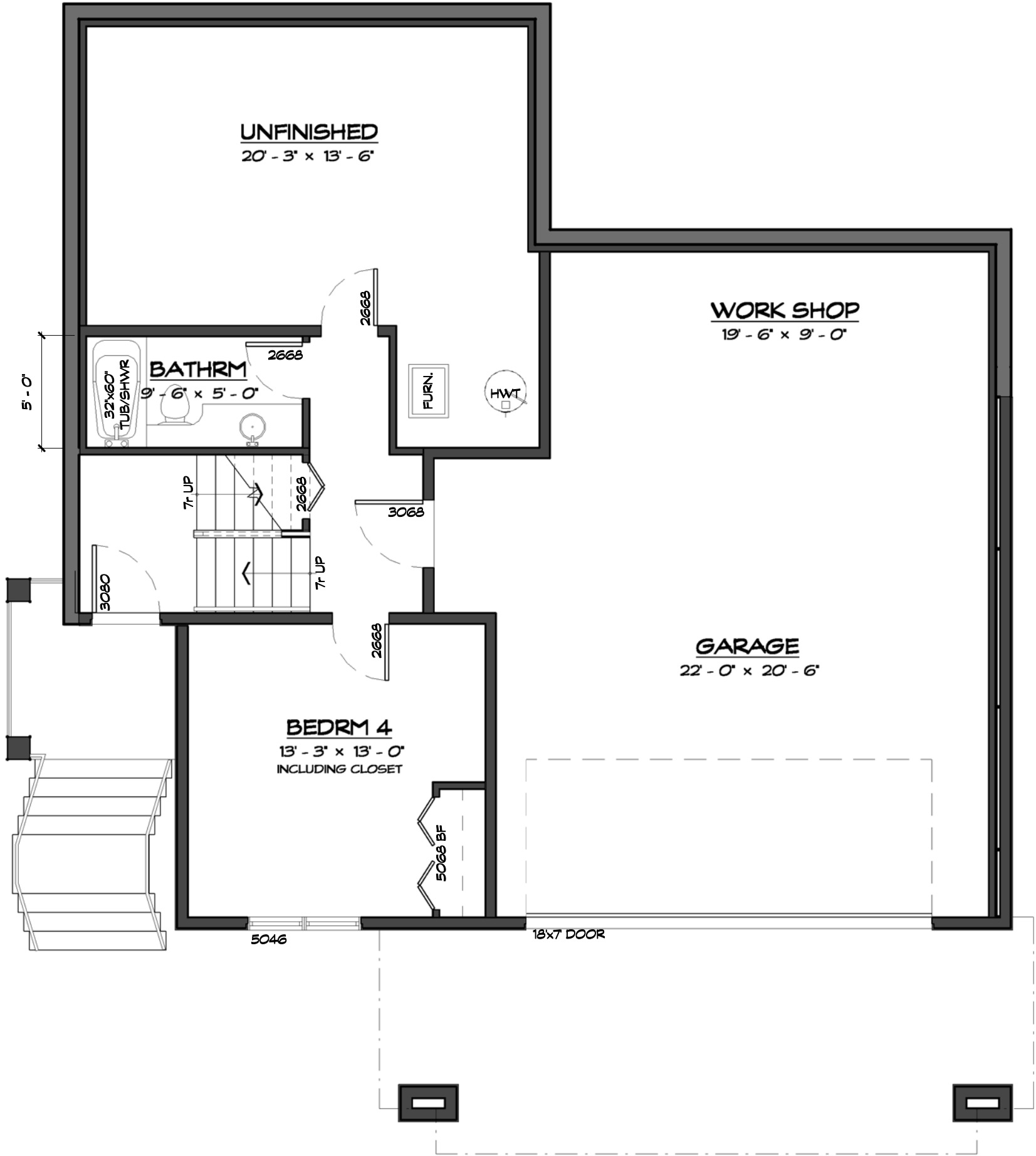
unit style:  
**Malbec**  
drawings prepared by:  
**Precision Building Design Associates**  
Chilliwack, B.C. (604) 792-0826

color scheme:  
**Scheme -**  
date:  
**April 24, 2015**  
scale:  
**3/16" = 1'-0"**



This home will be designed and built to comply with BC Building Code 2006 edition

-Drawings are subject to change without notice. The developer reserves the to make modifications to the drawings at their sole discretion in accordance with building code guidelines and to maintain the high quality of the homes.  
-Window sizes are subject to change from site to site based on site limiting distance calculations.  
-Drawings to be read in conjunction with structural drawings by VanDenBrink Engineering LTD.  
-These drawings are based on the original drawings and details created by Rositch Hemphill Architects, and have been subsequently modified and/or reformatted by Precision Building Design Associates Ltd.



## LOWER FLOOR PLAN

400 SQ. FT. FINISHED LOWER FLOOR AREA INCLUDING STAIRS  
 350 SQ. FT. UNFINISHED LOWER FLOOR AREA  
 750 SQ. FT. TOTAL LOWER FLOOR AREA



the cottages  
 ON OSOY00S LAKE

unit number:  
**000**

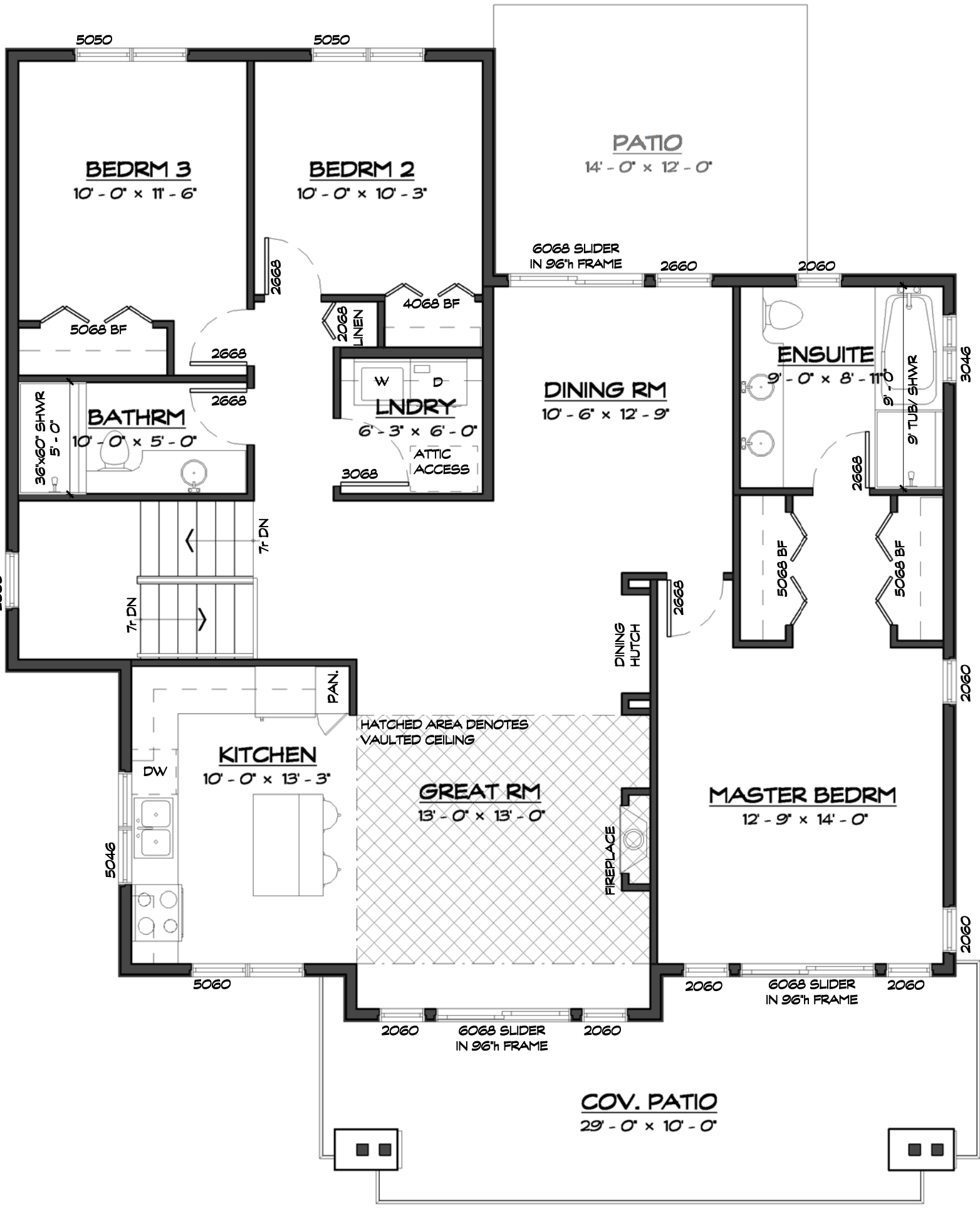
unit style:  
**Malbec**  
 drawings prepared by:  
 Precision Building Design Associates  
 Chilliwack, B.C. (604) 792-0826

color scheme:  
 Scheme -  
 date:  
 April 24, 2015  
 scale:  
 3/16" = 1'-0"



This home will be designed and built to comply with BC Building Code 2006 edition

-Drawings are subject to change without notice. The developer reserves the to make modifications to the drawings at their sole discretion in accordance with building code guidelines and to maintain the high quality of the homes.  
 -Window sizes are subject to change from site to site based on site limiting distance calculations.  
 -Drawings to be read in conjunction with structural drawings by VanDenBrink Engineering LTD.  
 -These drawings are based on the original drawings and details created by Rositch Hemphill Architects, and have been subsequently modified and/or reformatted by Precision Building Design Associates Ltd.



# MAIN FLOOR PLAN

1400 SQ. FT. MAIN FLOOR AREA EXCLUDING STAIRS  
 750 SQ. FT. LOWER FLOOR AREA INCLUDING STAIRS/UNFINISHED  
 2150 SQ. FT. TOTAL FLOOR AREA



the cottages  
 ON OSOYOOO LAKE

unit number:  
**000**

unit style:  
**Malbec**  
 drawings prepared by:  
 Precision Building Design Associates  
 Chilliwack, B.C. (604) 792-0826

color scheme:  
 Scheme -  
 date:  
 April 24, 2015  
 scale:  
 3/16" = 1'-0"

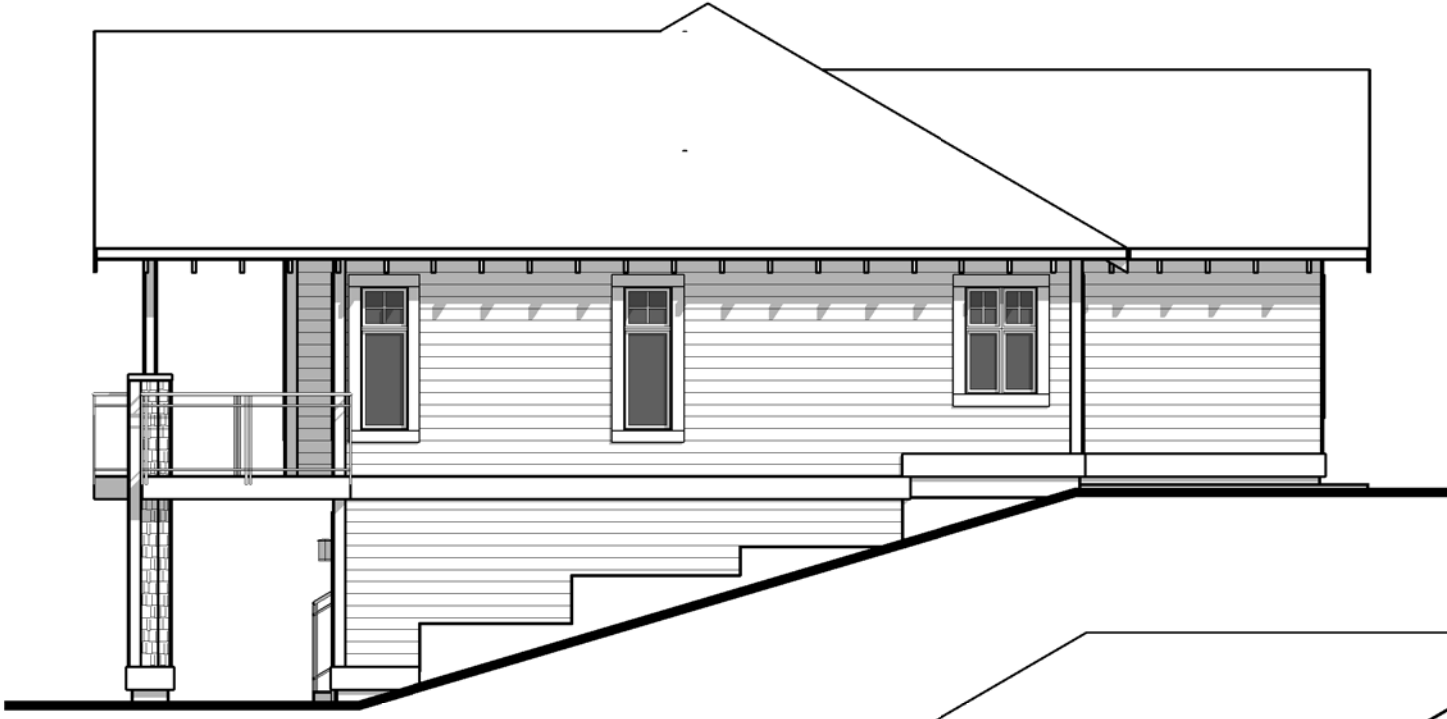


This home will be designed and built to comply with BC Building Code 2006 edition

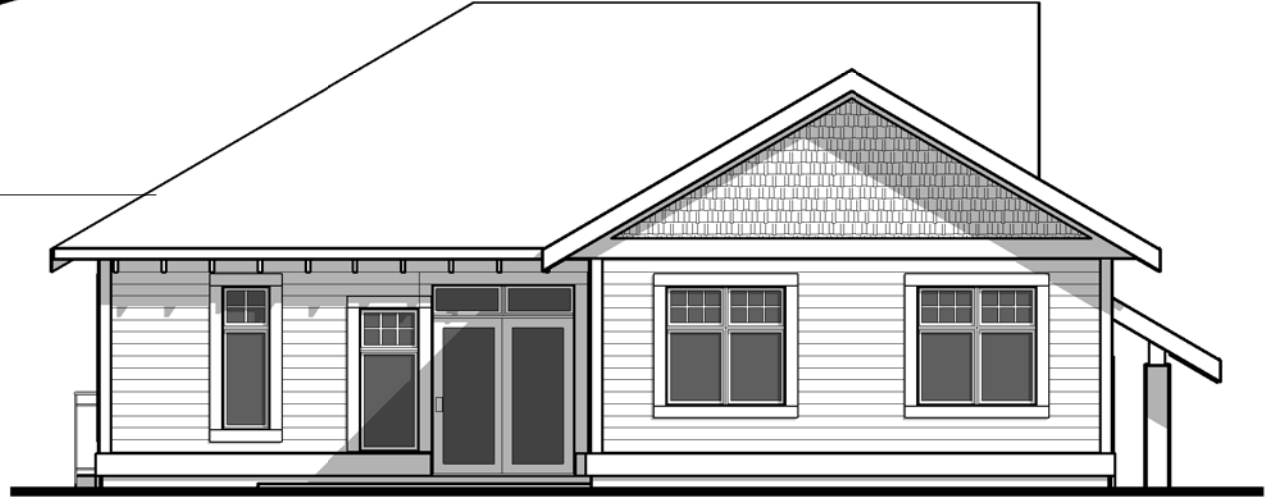
-Drawings are subject to change without notice. The developer reserves the to make modifications to the drawings at their sole discretion in accordance with building code guidelines and to maintain the high quality of the homes.  
 -Window sizes are subject to change from site to site based on site limiting distance calculations.  
 -Drawings to be read in conjunction with structural drawings by VanDenBrink Engineering LTD.  
 -These drawings are based on the original drawings and details created by Rositch Hemphill Architects, and have been subsequently modified and/or reformatted by Precision Building Design Associates Ltd.



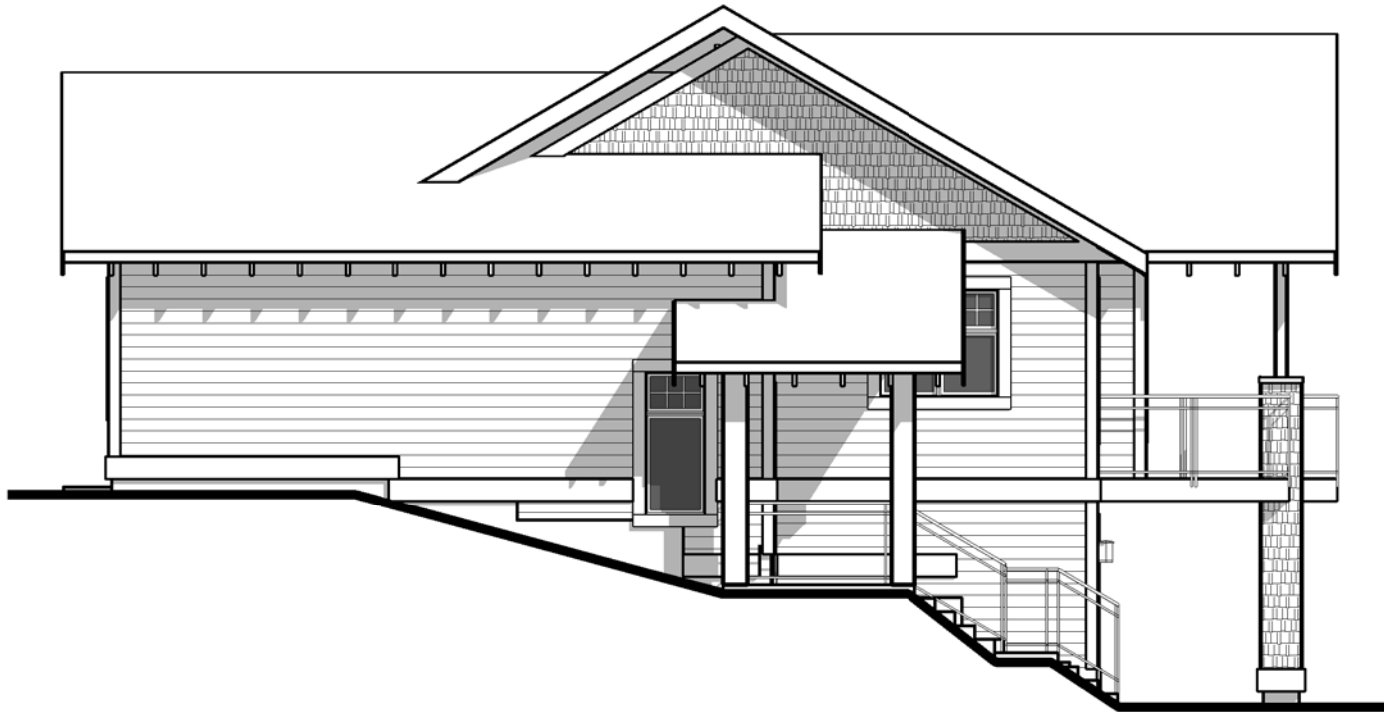
**FRONT ELEVATION**



**RH SIDE ELEV.**



**REAR ELEVATION**



**LH SIDE ELEVATION**



the cottages  
ON OSOYOOUS LAKE

unit number:  
**000**

unit style:  
**Malbec**  
drawings prepared by:  
Precision Building Design Associates  
Chilliwack, B.C. (604) 792-0826

color scheme:  
**Scheme -**  
date:  
April 24, 2015  
scale:  
1/8" = 1'-0"



-Drawings are subject to change without notice. The developer reserves the to make modifications to the drawings at their sole discretion in accordance with building code guidelines and to maintain the high quality of the homes.  
-Window sizes are subject to change from site to site based on site limiting distance calculations.  
-Drawings to be read in conjunction with structural drawings by VanDenBrink Engineering LTD.  
-These drawings are based on the original drawings and details created by Rositch Hemphill Architects, and have been subsequently modified and/or reformatted by Precision Building Design Associates Ltd.