



**FRONT ELEVATION**



**REAR ELEVATION**

These plans are intended for illustration purposes. Detailed working drawings will be provided to subcontractors and suppliers for construction purposes. The developer reserves the right to make changes to the plans and specifications at their discretion. Refer to colour boards for actual exterior colors. E and O E



**the cottages**  
ON OSOYOOO LAKE

unit number:  
**000**

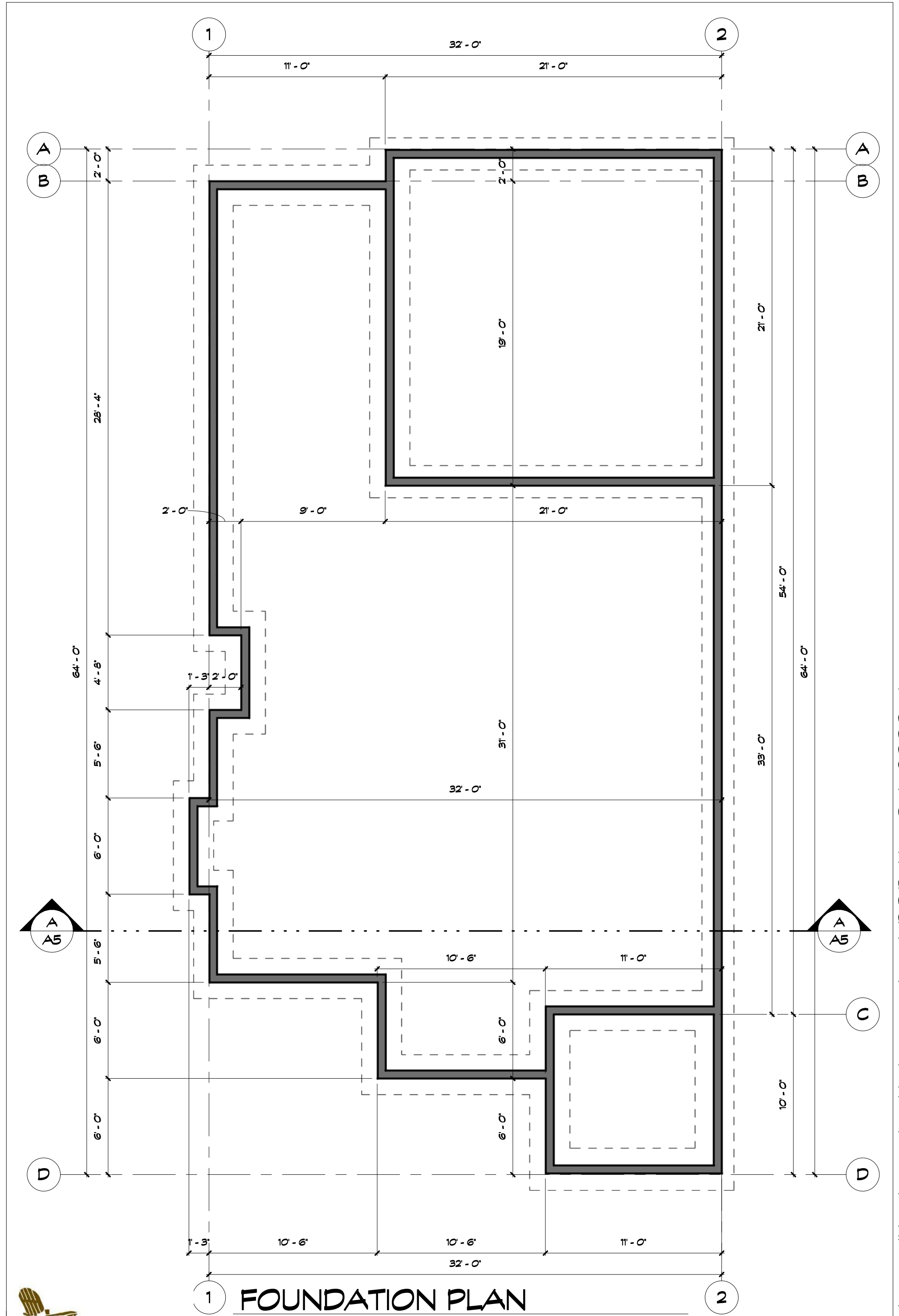
unit style:  
**Gala**  
drawings prepared by:  
**Precision Building Design Associates**  
Chilliwack, B.C. (604) 792-0826

color scheme:  
**Scheme - TBD**  
date:  
**May 8, 2018**  
scale:  
**3/16" = 1'-0"**



This home will be designed and built to comply with BC Building Code 2006 edition

-Drawings are subject to change without notice. The developer reserves the to make modifications to the drawings at their sole discretion in accordance with building code guidelines and to maintain the high quality of the homes.  
-Window sizes are subject to change from site to site based on site limiting distance calculations.  
-Drawings to be read in conjunction with structural drawings by VanDenBrink Engineering LTD.  
-These drawings are based on the original drawings and details created by Rositch Hemphill Architects, and have been subsequently modified and/or reformatted by Precision Building Design Associates Ltd.



1 FOUNDATION PLAN 2



unit number:  
**000**

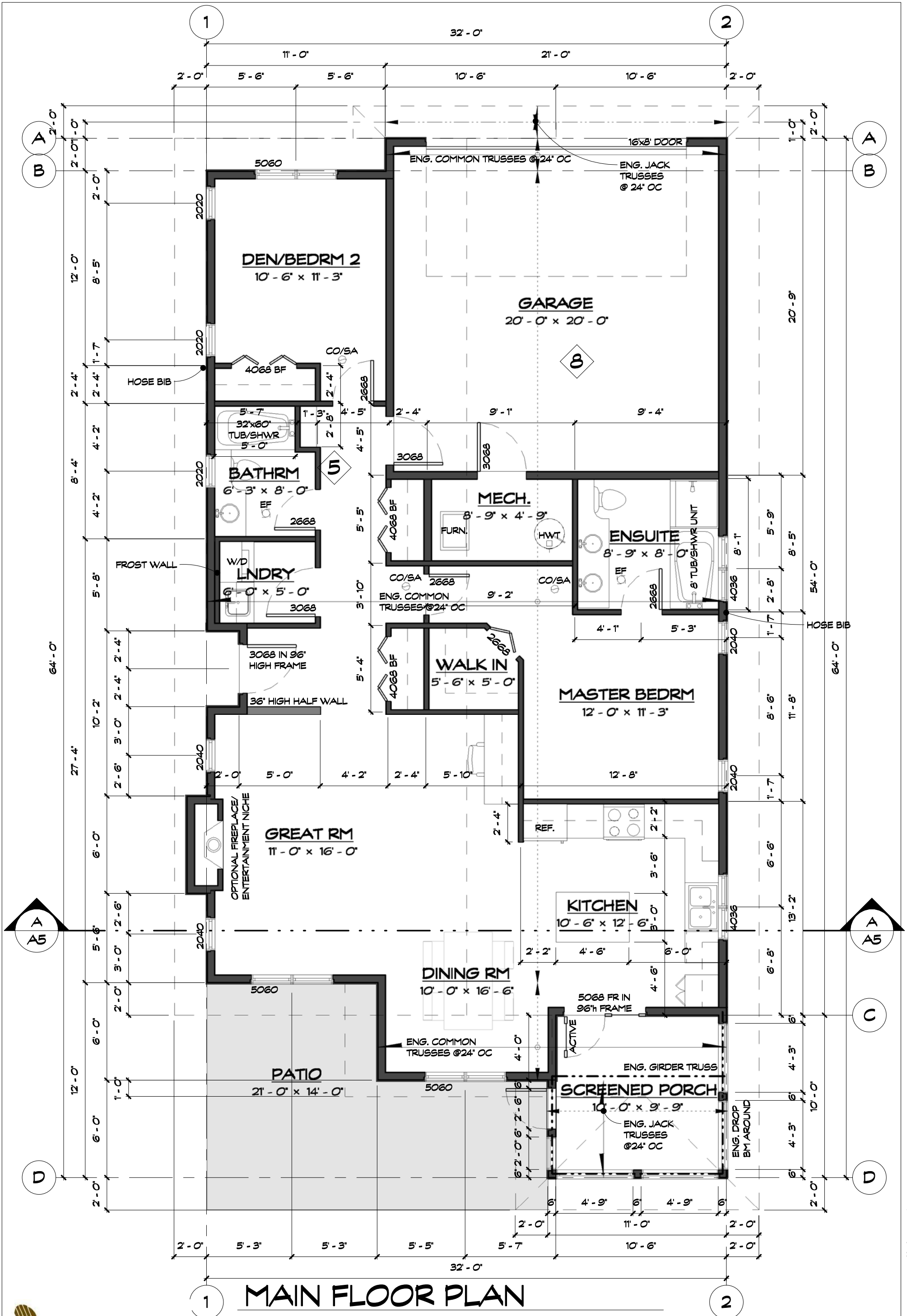
unit style:  
**Gala**  
drawings prepared by:  
**Precision Building Design Associates**  
Chilliwack, B.C. (604) 792-0826

color scheme:  
**Scheme - TBD**  
date:  
**May 8, 2018**  
scale:  
**3/16" = 1'-0"**



-Drawings are subject to change without notice. The developer reserves the to make modifications to the drawings at their sole discretion in accordance with building code guidelines and to maintain the high quality of the homes.  
-Window sizes are subject to change from site to site based on site limiting distance calculations.  
-Drawings to be read in conjunction with structural drawings by VanDenBrink Engineering LTD.  
-These drawings are based on the original drawings and details created by Rositch Hemphill Architects, and have been subsequently modified and/or reformatted by Precision Building Design Associates Ltd.

This home will be designed and built to comply with BC Building Code 2006 edition



# MAIN FLOOR PLAN

1300 SQ. FT. MAIN FLOOR AREA INCLUDING MECH ROOM, STAIRS/EXCLUDING SCREENED PORCH



the cottages  
ON OSOYUOS LAKE

unit number:  
**000**

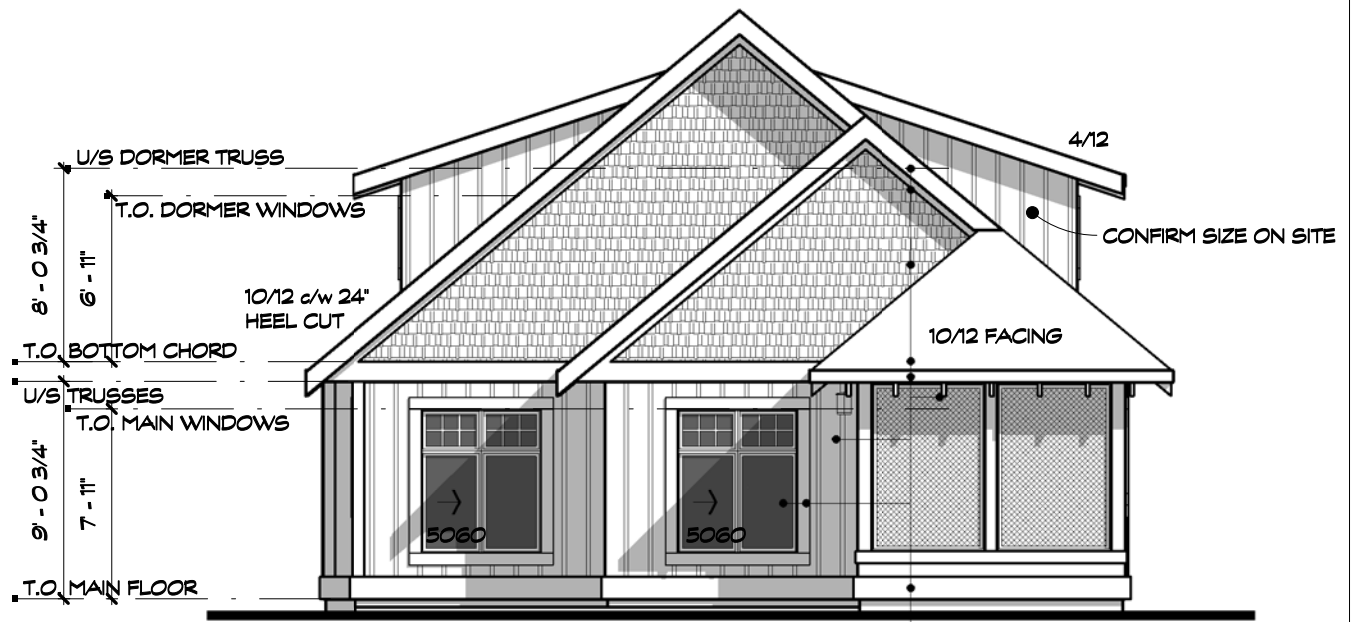
unit style:  
**Gala**  
drawings prepared by:  
Precision Building Design Associates  
Chilliwack, B.C. (604) 792-0826

color scheme:  
Scheme - TBD  
date:  
May 8, 2018  
scale:  
3/16" = 1'-0"



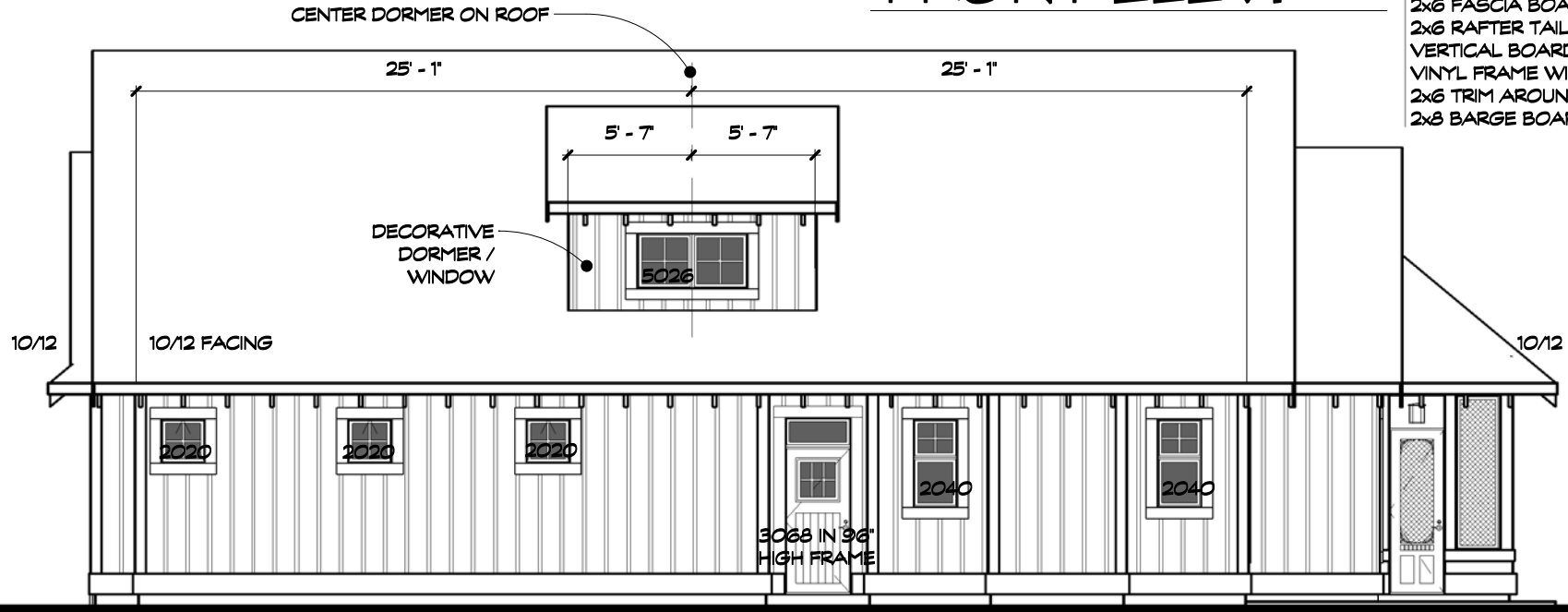
This home will be designed and built to comply with BC Building Code 2006 edition

-Drawings are subject to change without notice. The developer reserves the to make modifications to the drawings at their sole discretion in accordance with building code guidelines and to maintain the high quality of the homes.  
-Window sizes are subject to change from site to site based on site limiting distance calculations.  
-Drawings to be read in conjunction with structural drawings by VanDenBrink Engineering LTD.  
-These drawings are based on the original drawings and details created by Rositch Hemphill Architects, and have been subsequently modified and/or reformatted by Precision Building Design Associates Ltd.



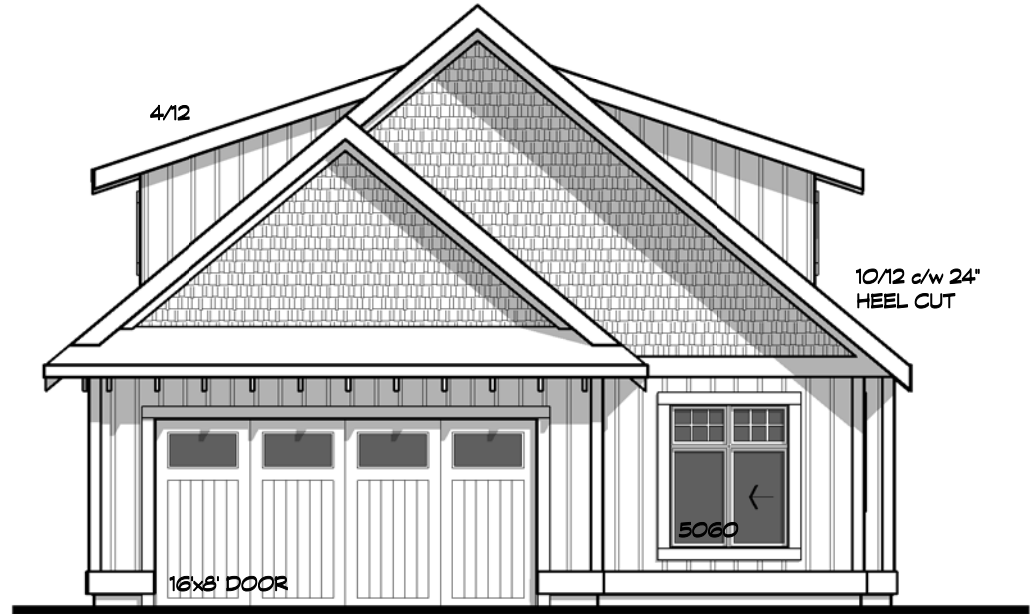
## FRONT ELEV.

- 2x8 TRIM BOARD
- 2x10 GABLE END FASCIA
- HARDI SHINGLES
- SHINGLE ROOF
- 2x6 FASCIA BOARD
- 2x6 RAFTER TAILS @ 24" OC
- VERTICAL BOARD AND BATTEN SIDING
- VINYL FRAME WINDOWS
- 2x6 TRIM AROUND EXTERIOR OPENINGS
- 2x8 BARGE BOARD

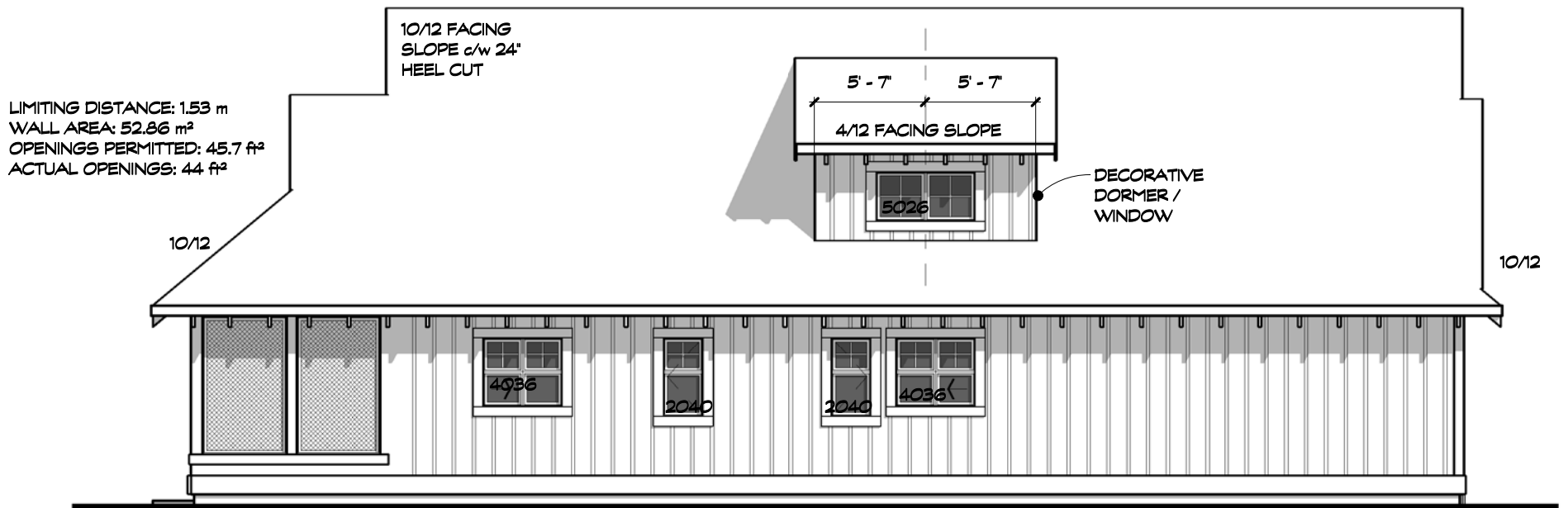


## LH SIDE ELEVATION

LIMITING DISTANCE: 1.53 m  
 WALL AREA: 56.48 m<sup>2</sup>  
 OPENINGS PERMITTED: 42.3 ft<sup>2</sup>  
 ACTUAL OPENINGS: 36.5 ft<sup>2</sup>



## REAR ELEVATION



## RH SIDE ELEVATION



the cottages  
ON OSOYOOS LAKE

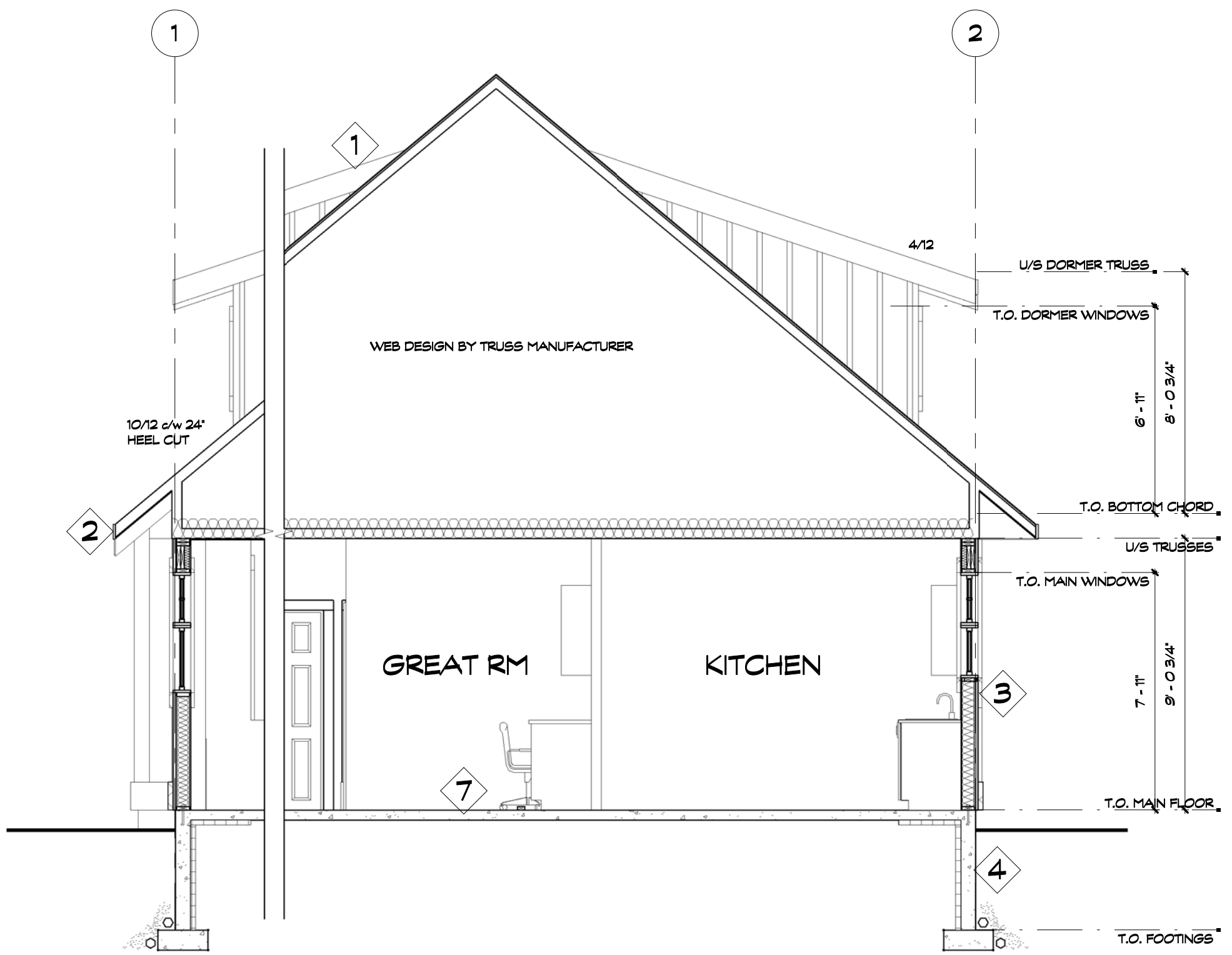
unit number:  
**000**

unit style:  
**Gala**  
drawings prepared by:  
Precision Building Design Associates  
Chilliwack, B.C. (604) 792-0826

color scheme:  
Scheme - TBD  
date:  
May 8, 2013  
scale:  
1/8" = 1'-0"



-Drawings are subject to change without notice. The developer reserves the to make modifications to the drawings at their sole discretion in accordance with building code guidelines and to maintain the high quality of the homes.  
 -Window sizes are subject to change from site to site based on site limiting distance calculations.  
 -Drawings to be read in conjunction with structural drawings by VanDenBrink Engineering LTD.  
 -These drawings are based on the original drawings and details created by Rositch Hemphill Architects, and have been subsequently modified and/or reformatted by Precision Building Design Associates Ltd.



## CROSS SECTION

| ASSEMBLIES |  |
|------------|--|
| 1          | <b>MAIN ROOF</b><br>FIBERGLASS SHINGLE ROOF<br>15# BUILDING PAPER OVER ENTIRE ROOF SURFACE<br>1/2" OSB OR PLYWOOD SHEATHING c/w H-CLIPS AS REQ'D<br>ENGINEERED TRUSSES @ 24" OC<br>1:300 ATTIC VENTILATION (PLASTIC RIDGE VENTS)<br>R-40 LOOSE FILL ATTIC INSULATION<br>6mil POLY VB ON WARM SIDE<br>5/8" GYPSUM BOARD CEILINGS FINISHED |
| 2          | <b>FASCIA</b><br>5/4"x6" HARDIE BOARD FASCIA<br>5/4"x10" HARDIE BOARD GABLE END FASCIA<br>PAINTED 1/2" PLYWOOD (SLOPED WITH U/S OF ROOF SHEATHING)<br>2x6 RAFTER TAILS @ 24" OC  |
| 3          | <b>EXTERIOR WALLS</b><br>HARDI SIDING (REFER TO ELEVATIONS)<br>TYPAR<br>1/2" PLYWOOD OR OSB SHEATHING<br>2x6 STUDS @ 16" OC<br>R20 BATT INSULATION<br>6mil POLY VB ON WARM SIDE<br>1/2" WALL GYPSUM BOARD FINISHED   |

| ASSEMBLIES |  |
|------------|--|
| 4          | <b>EXTERIOR FOUNDATION WALLS</b><br>CONCRETE FOUNDATION/FOOTINGS TO BE ENGINEERED<br>SILL GASKET<br>5/8" x 10" A.B'S @ 6'-0" OC<br>ASPHALT EMULSION<br>2" RIGID INSULATION LINER ON INSIDE<br>ENG. CONCRETE FOOTING<br>PLACE ON UNDISTURBED SOIL FREE OF FILL<br>ENGINEER APPROVED PAD |
| 5          | <b>INTERIOR WALLS</b><br>2x4 STUDS @ 16" OC WITH DBL TOP AND SINGLE BOTTOM PLATES<br>1/2" WALL GYPSUM BOARD FINISHED   |
| 7          | <b>CONCRETE FLOOR</b><br>4" CONCRETE SLAB<br>ON 6mil POLY<br>MIN 6" COMPACTED GRANULAR FILL  |
| 8          | <b>GARAGE FLOOR</b><br>4" CONCRETE SLAB SLOPED 1% AWAY<br>ON 6mil POLY<br>MIN 6" COMPACTED GRANULAR FILL   |



the cottages  
ON OSOYOOS LAKE

unit number:

000

unit style:

Gala

drawings prepared by:  
Precision Building Design Associates  
Chilliwack, B.C. (604) 792-0826

color scheme:

Scheme - TBD

date:

May 8, 2018

scale:

1/4" = 1'-0"



van maren  
GROUP OF COMPANIES

-Drawings are subject to change without notice. The developer reserves the to make modifications to the drawings at their sole discretion in accordance with building code guidelines and to maintain the high quality of the homes.  
 -Window sizes are subject to change from site to site based on site limiting distance calculations.  
 -Drawings to be read in conjunction with structural drawings by VanDenBrink Engineering LTD.  
 -These drawings are based on the original drawings and details created by Rositch Hemphill Architects, and have been subsequently modified and/or reformatted by Precision Building Design Associates Ltd.

This home will be designed and built to comply with BC Building Code 2006 edition