



FRONT ELEVATION



REAR ELEVATION

These plans are intended for illustration purposes. Detailed working drawings will be provided to subcontractors and suppliers for construction purposes. The developer reserves the right to make changes to the plans and specifications at their discretion. Refer to colour boards for actual exterior colors. E and O E



the cottages
ON OSOYOOO LAKE

unit number:
000

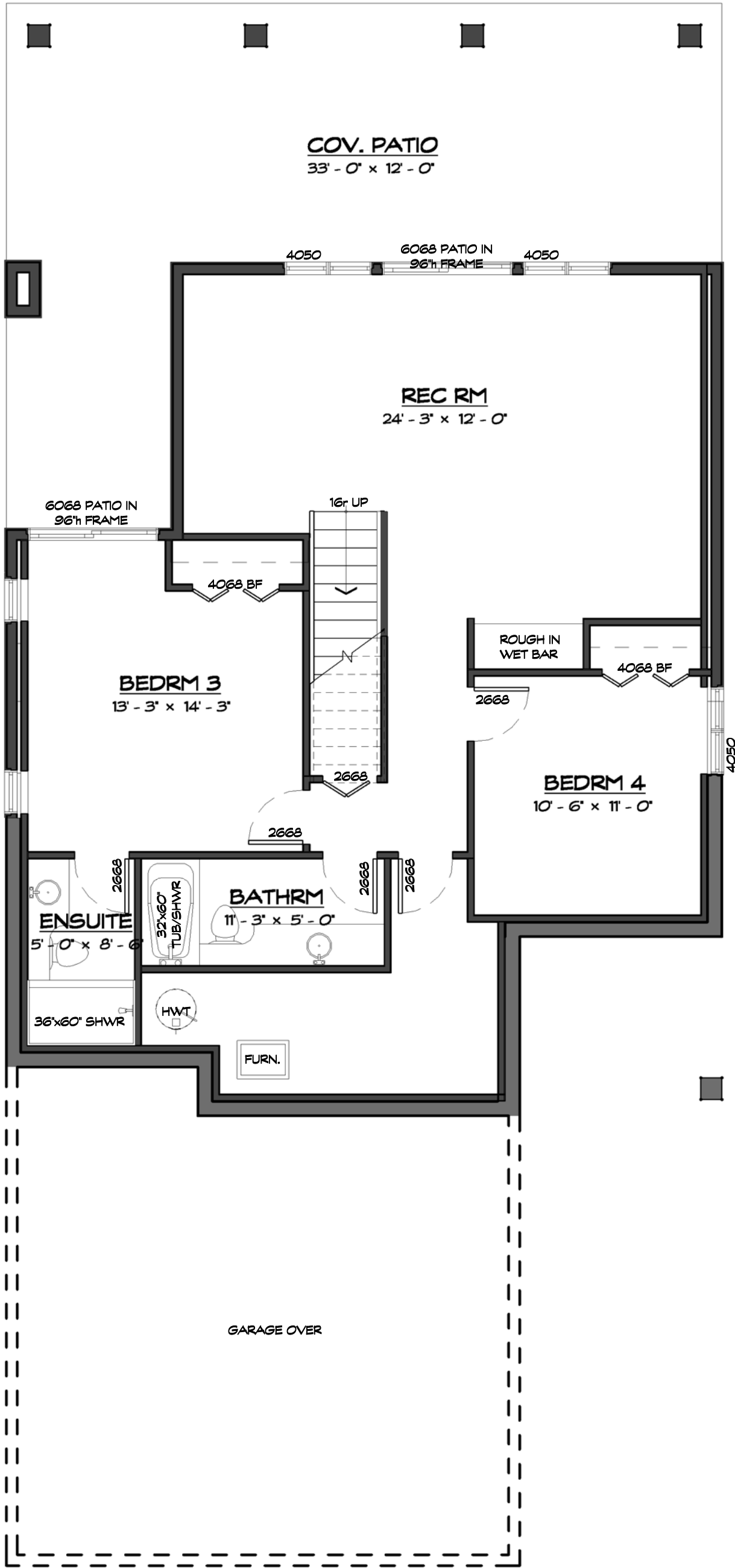
unit style:
Chardonnay
drawings prepared by:
Precision Building Design Associates
Chilliwack, B.C. (604) 792-0826

color scheme:
Scheme -
date:
January 14, 2016
scale:
3/16" = 1'-0"



This home will be designed and built to comply with BC Building Code 2006 edition

-Drawings are subject to change without notice. The developer reserves the to make modifications to the drawings at their sole discretion in accordance with building code guidelines and to maintain the high quality of the homes.
-Window sizes are subject to change from site to site based on site limiting distance calculations.
-Drawings to be read in conjunction with structural drawings by VanDenBrink Engineering LTD.
-These drawings are based on the original drawings and details created by Rositch Hemphill Architects, and have been subsequently modified and/or reformatted by Precision Building Design Associates Ltd.



LOWER FLOOR PLAN

1060 SQ. FT. LOWER FLOOR AREA EXCLUDING STAIRS



the cottages
ON OSOYOOO LAKE

unit number:

000

unit style:

Chardonnay

drawings prepared by:
Precision Building Design Associates
Chilliwack, B.C. (604) 792-0826

color scheme:

Scheme -

date: January 14, 2016

scale:

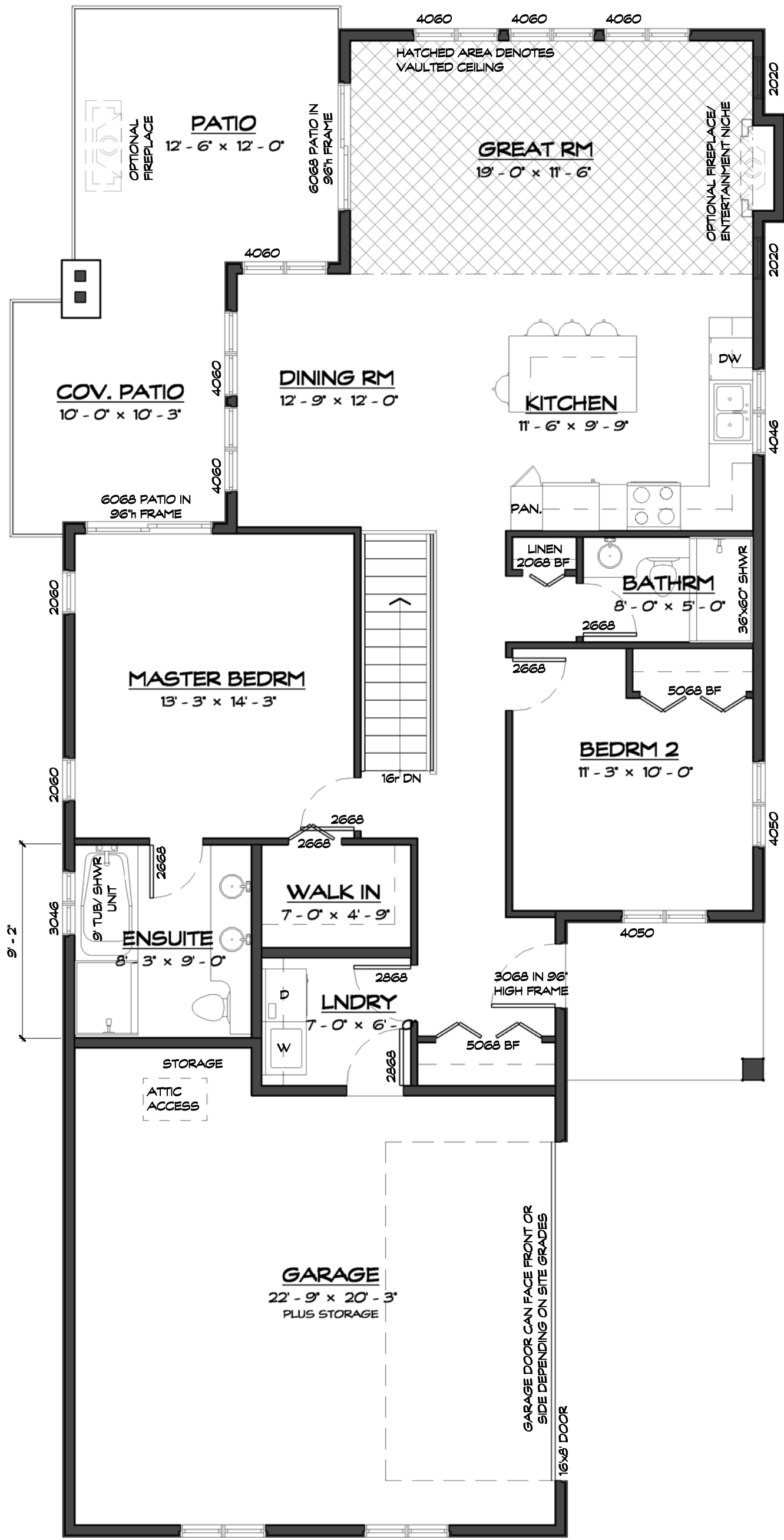
3/16" = 1'-0"



van maren
GROUP OF COMPANIES

-Drawings are subject to change without notice. The developer reserves the to make modifications to the drawings at their sole discretion in accordance with building code guidelines and to maintain the high quality of the homes.
-Window sizes are subject to change from site to site based on site limiting distance calculations.
-Drawings to be read in conjunction with structural drawings by VanDenBrink Engineering LTD.
-These drawings are based on the original drawings and details created by Rositch Hemphill Architects, and have been subsequently modified and/or reformatted by Precision Building Design Associates Ltd.

This home will be designed and built to comply with BC Building Code 2006 edition



MAIN FLOOR PLAN

1330 SQ. FT. MAIN FLOOR AREA INCLUDING STAIRS
 1060 SQ. FT. LOWER FLOOR AREA EXCLUDING STAIRS
 2390 SQ. FT. TOTAL FLOOR AREA



the cottages
 ON OSOY00S LAKE

unit number:
000

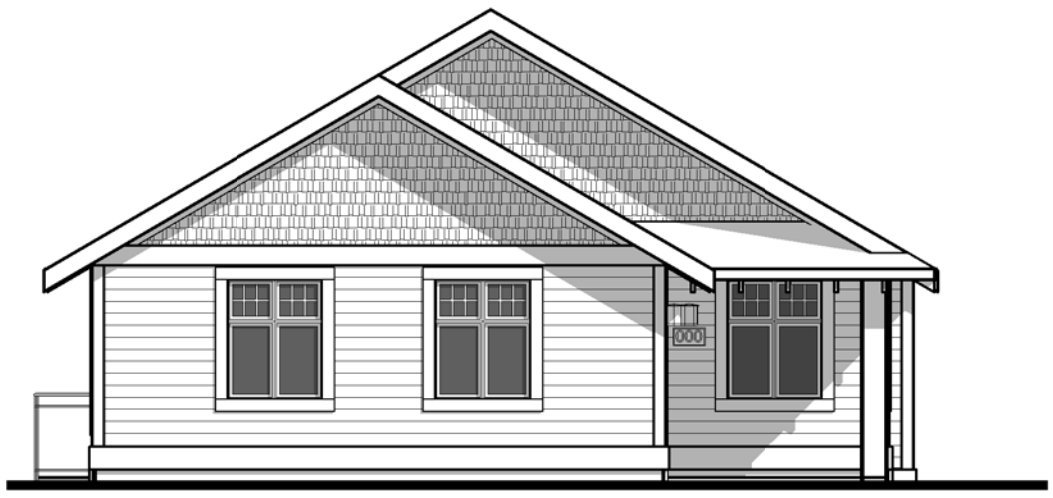
unit style:
Chardonnay
 drawings prepared by:
 Precision Building Design Associates
 Chilliwack, B.C. (604) 792-0826

color scheme:
 Scheme -
 date:
 January 14, 2016
 scale:
 3/16" = 1'-0"



This home will be designed and built to comply with BC Building Code 2006 edition

-Drawings are subject to change without notice. The developer reserves the to make modifications to the drawings at their sole discretion in accordance with building code guidelines and to maintain the high quality of the homes.
 -Window sizes are subject to change from site to site based on site limiting distance calculations.
 -Drawings to be read in conjunction with structural drawings by VanDenBrink Engineering LTD.
 -These drawings are based on the original drawings and details created by Rositch Hemphill Architects, and have been subsequently modified and/or reformatted by Precision Building Design Associates Ltd.



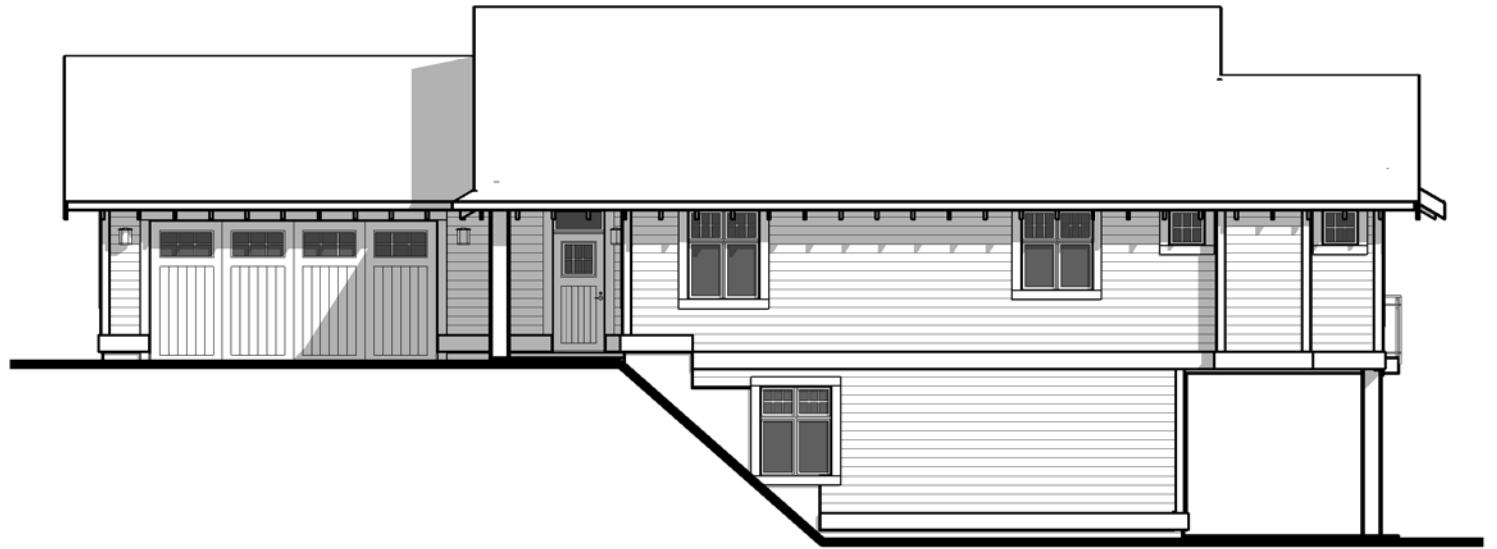
FRONT ELEVATION

1/8" = 1'-0"



REAR ELEVATION

1/8" = 1'-0"



RH SIDE ELEVATION

3/32" = 1'-0"



LH SIDE ELEVATION

3/32" = 1'-0"



the cottages
ON OSOYOOO LAKE

unit number:

000

unit style:

Chardonnay

drawings prepared by:
Precision Building Design Associates
Chilliwack, B.C. (604) 792-0826

color scheme:

Scheme -

date:

January 14, 2016

scale:

As indicated



van maren
GROUP OF COMPANIES

-Drawings are subject to change without notice. The developer reserves the to make modifications to the drawings at their sole discretion in accordance with building code guidelines and to maintain the high quality of the homes.
-Window sizes are subject to change from site to site based on site limiting distance calculations.
-Drawings to be read in conjunction with structural drawings by VanDenBrink Engineering LTD.
-These drawings are based on the original drawings and details created by Rositch Hemphill Architects, and have been subsequently modified and/or reformatted by Precision Building Design Associates Ltd.

This home will be designed and built to comply with BC Building Code 2006 edition