



FRONT ELEVATION



REAR ELEVATION

These plans are intended for illustration purposes. Detailed working drawings will be provided to subcontractors and suppliers for construction purposes. The developer reserves the right to make changes to the plans and specifications at their discretion. Refer to colour boards for actual exterior colors. E and O E



the cottages
ON OSOYOOO LAKE

unit number:
000

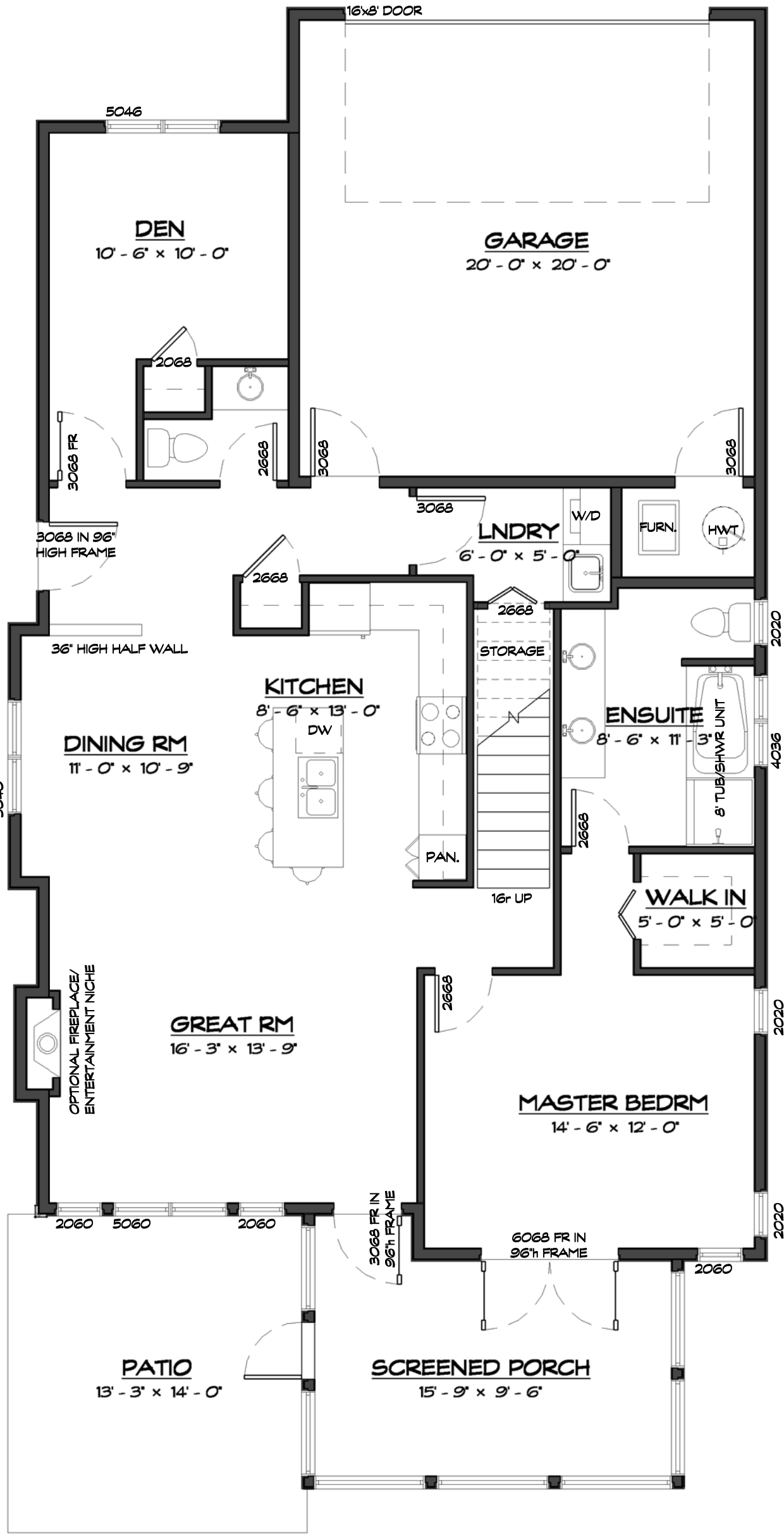
unit style:
Burgundy
drawings prepared by:
Precision Building Design Associates
Chilliwack, B.C. (604) 792-0826

color scheme:
Scheme - TBD
date:
January 15, 2016
scale:
3/16" = 1'-0"



This home will be designed and built to comply with BC Building Code 2006 edition

-Drawings are subject to change without notice. The developer reserves the to make modifications to the drawings at their sole discretion in accordance with building code guidelines and to maintain the high quality of the homes.
-Window sizes are subject to change from site to site based on site limiting distance calculations.
-Drawings to be read in conjunction with structural drawings by VanDenBrink Engineering LTD.
-These drawings are based on the original drawings and details created by Rositch Hemphill Architects, and have been subsequently modified and/or reformatted by Precision Building Design Associates Ltd.



MAIN FLOOR PLAN

1265 SQ. FT. MAIN FLOOR AREA INCLUDING STAIRS/EXCLUDING SCREENED PORCH
 745 SQ. FT. LOFT FLOOR AREA EXCLUDING STAIRS
 2010 SQ. FT. TOTAL FLOOR AREA



the cottages
 ON OSOYOOO LAKE

unit number:
000

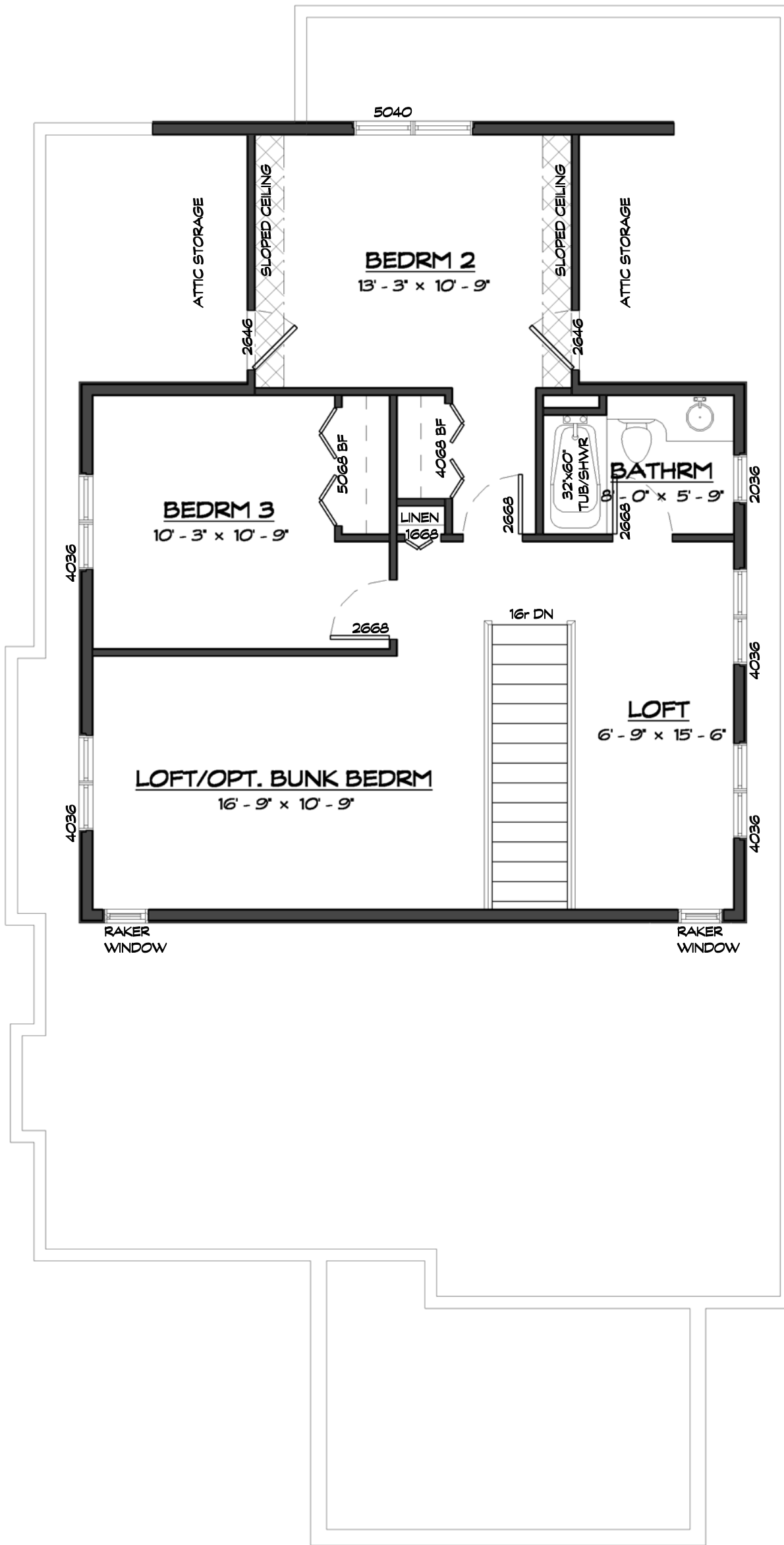
unit style:
Burgundy
 drawings prepared by:
 Precision Building Design Associates
 Chilliwack, B.C. (604) 792-0826

color scheme:
 Scheme - TBD
 date:
 January 15, 2016
 scale:
 3/16" = 1'-0"



van maren
 GROUP OF COMPANIES

-Drawings are subject to change without notice. The developer reserves the to make modifications to the drawings at their sole discretion in accordance with building code guidelines and to maintain the high quality of the homes.
 -Window sizes are subject to change from site to site based on site limiting distance calculations.
 -Drawings to be read in conjunction with structural drawings by VanDenBrink Engineering LTD.
 -These drawings are based on the original drawings and details created by Rositch Hemphill Architects, and have been subsequently modified and/or reformatted by Precision Building Design Associates Ltd.



LOFT FLOOR PLAN

745 SQ. FT. LOFT FLOOR AREA EXCLUDING STAIRS



unit number:
000

unit style:
Burgundy
drawings prepared by:
Precision Building Design Associates
Chilliwack, B.C. (604) 792-0826

color scheme:
Scheme - TBD
date:
January 15, 2016
scale:
3/16" = 1'-0"

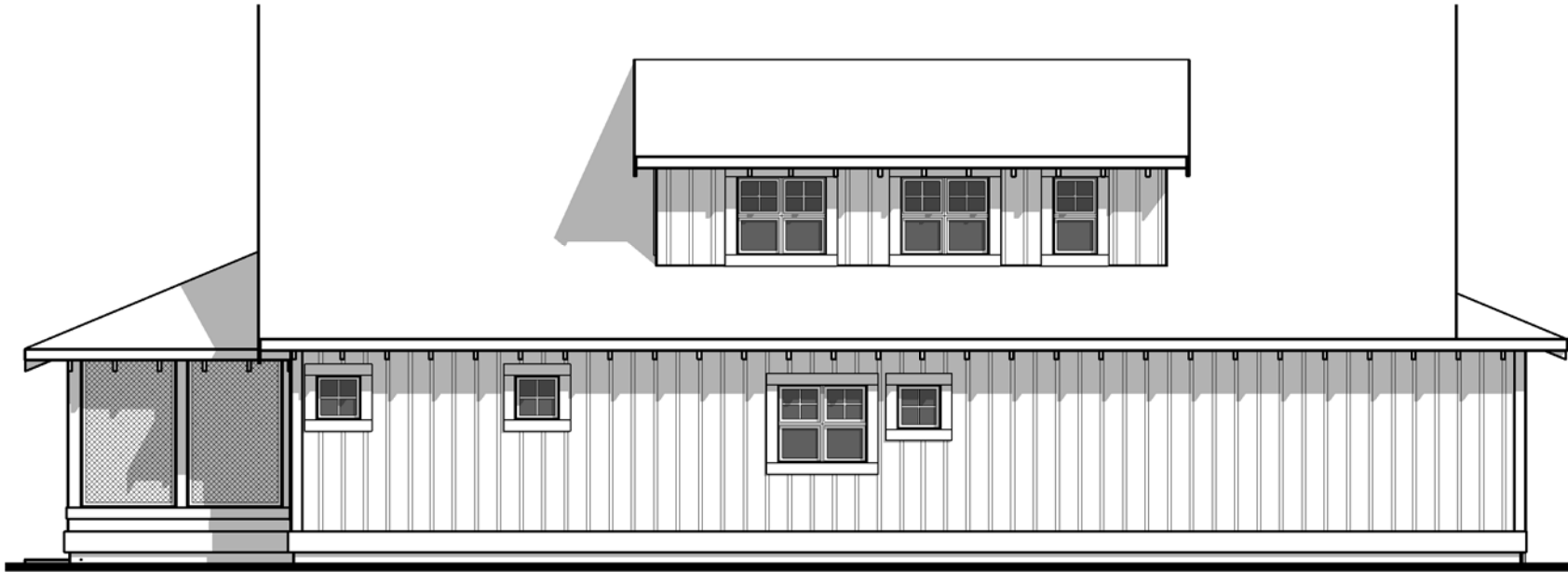


-Drawings are subject to change without notice. The developer reserves the to make modifications to the drawings at their sole discretion in accordance with building code guidelines and to maintain the high quality of the homes.
-Window sizes are subject to change from site to site based on site limiting distance calculations.
-Drawings to be read in conjunction with structural drawings by VanDenBrink Engineering LTD.
-These drawings are based on the original drawings and details created by Rositch Hemphill Architects, and have been subsequently modified and/or reformatted by Precision Building Design Associates Ltd.

This home will be designed and built to comply with BC Building Code 2006 edition



FRONT ELEVATION



RH SIDE ELEVATION



REAR ELEVATION



LH SIDE ELEVATION



the cottages
ON OSOYOOO LAKE

unit number:
000

unit style:
Burgundy
drawings prepared by:
Precision Building Design Associates
Chilliwack, B.C. (604) 792-0826

color scheme:
Scheme - TBD
date:
January 15, 2016
scale:
1/8" = 1'-0"



van maren
GROUP OF COMPANIES

-Drawings are subject to change without notice. The developer reserves the to make modifications to the drawings at their sole discretion in accordance with building code guidelines and to maintain the high quality of the homes.
-Window sizes are subject to change from site to site based on site limiting distance calculations.
-Drawings to be read in conjunction with structural drawings by VanDenBrink Engineering LTD.
-These drawings are based on the original drawings and details created by Rositch Hemphill Architects, and have been subsequently modified and/or reformatted by Precision Building Design Associates Ltd.

This home will be designed and built to comply with BC Building Code 2006 edition