

**FRONT ELEVATION**



**REAR ELEVATION**

These plans are intended for illustration purposes. Detailed working drawings will be provided to subcontractors and suppliers for construction purposes. The developer reserves the right to make changes to the plans and specifications at their discretion. Refer to colour boards for actual exterior colors. E and O E



**the cottages**  
ON OSOYOOOS LAKE

unit number:  
**000**

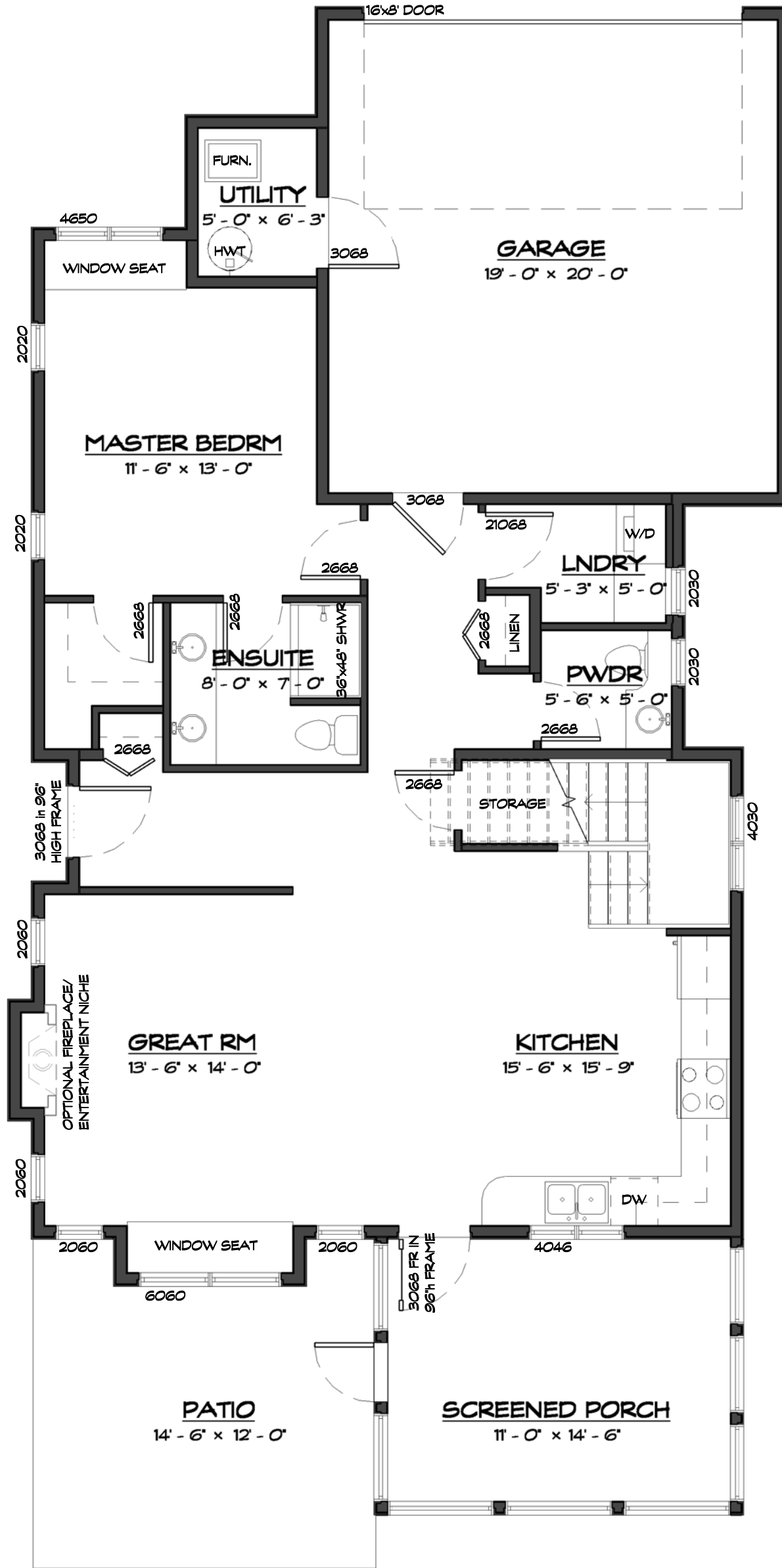
unit style:  
**Ambrosia**  
drawings prepared by:  
**Precision Building Design Associates**  
Chilliwack, B.C. (604) 792-0826

color scheme:  
**Scheme - ?**  
date:  
**October 18, 2016**  
scale:  
**3/16" = 1'-0"**



**van maren**  
GROUP OF COMPANIES

-Drawings are subject to change without notice. The developer reserves the right to make modifications to the drawings at their sole discretion in accordance with building code guidelines and to maintain the high quality of the homes.  
-Window sizes are subject to change from site to site based on site limiting distance calculations.  
-Drawings to be read in conjunction with structural drawings by VanDenBrink Engineering LTD.  
-These drawings are based on the original drawings and details created by Rositch Hemphill Architects, and have been subsequently modified and/or reformatted by Precision Building Design Associates Ltd.



# MAIN FLOOR PLAN

1100 SQ. FT. MAIN FLOOR AREA INCLUDING STAIRS/EXCLUDING SCREENED PORCH  
 530 SQ. FT. LOFT FLOOR AREA EXCLUDING STAIRS  
 1630 SQ. FT. TOTAL FLOOR AREA



the cottages  
 ON OSOYOOO LAKE

unit number:  
**000**

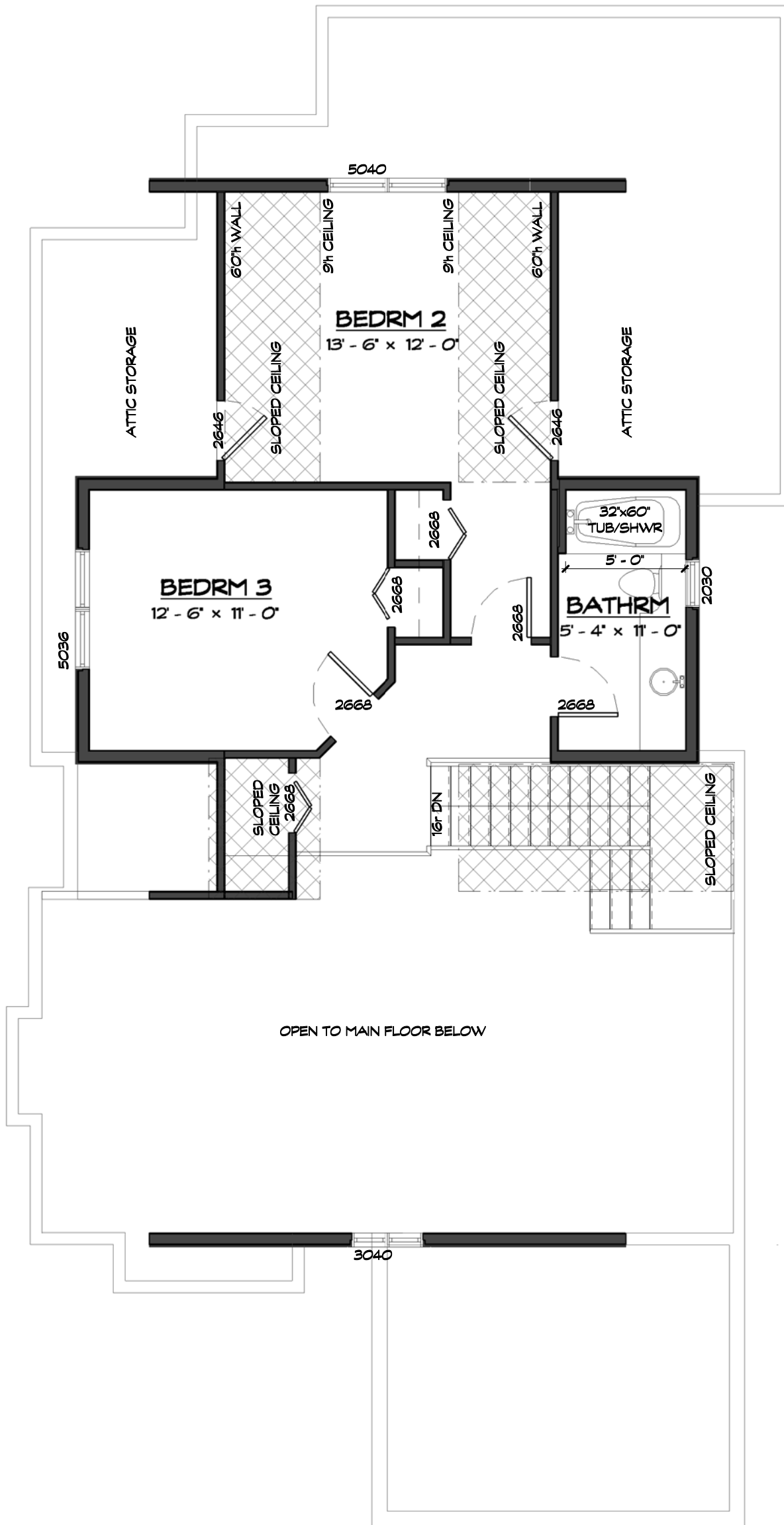
unit style:  
**Ambrosia**  
 drawings prepared by:  
 Precision Building Design Associates  
 Chilliwack, B.C. (604) 792-0826

color scheme:  
 Scheme - ?  
 date:  
 October 18, 2016  
 scale:  
 3/16" = 1'-0"



This home will be designed and built to comply with BC Building Code 2006 edition

-Drawings are subject to change without notice. The developer reserves the to make modifications to the drawings at their sole discretion in accordance with building code guidelines and to maintain the high quality of the homes.  
 -Window sizes are subject to change from site to site based on site limiting distance calculations.  
 -Drawings to be read in conjunction with structural drawings by VanDenBrink Engineering LTD.  
 -These drawings are based on the original drawings and details created by Rositch Hemphill Architects, and have been subsequently modified and/or reformatted by Precision Building Design Associates Ltd.



# LOFT FLOOR PLAN

530 SQ. FT. LOFT FLOOR AREA EXCLUDING STAIRS



unit number:  
**000**

unit style:  
**Ambrosia**  
drawings prepared by:  
**Precision Building Design Associates**  
Chilliwack, B.C. (604) 792-0826

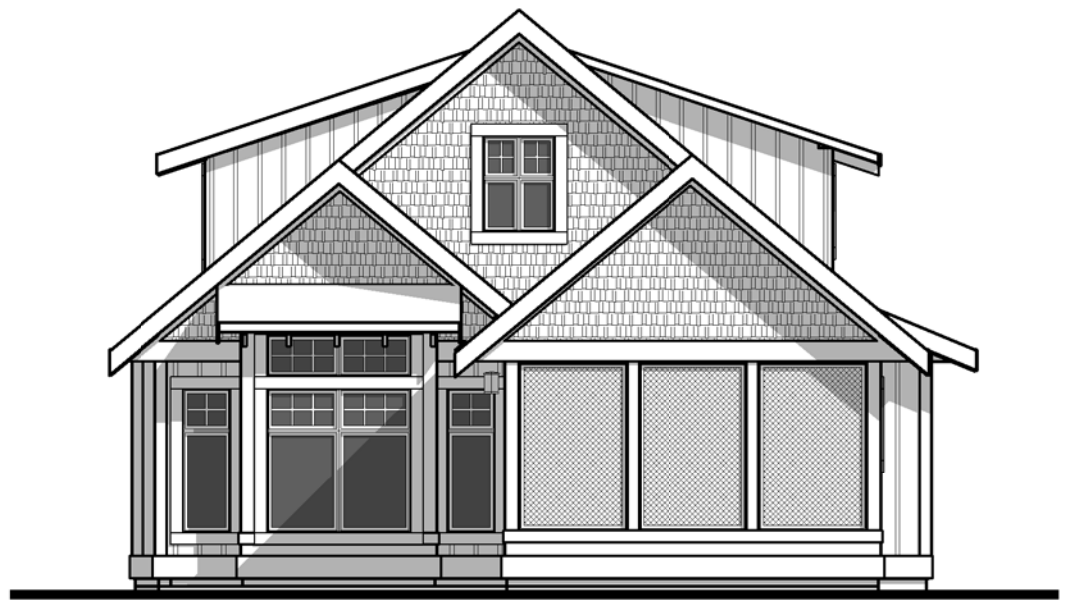
color scheme:  
**Scheme - ?**  
date:  
**October 18, 2016**  
scale:  
**3/16" = 1'-0"**



-Drawings are subject to change without notice. The developer reserves the to make modifications to the drawings at their sole discretion in accordance with building code guidelines and to maintain the high quality of the homes.  
 -Window sizes are subject to change from site to site based on site limiting distance calculations.  
 -Drawings to be read in conjunction with structural drawings by VanDenBrink Engineering LTD.  
 -These drawings are based on the original drawings and details created by Rositch Hemphill Architects, and have been subsequently modified and/or reformatted by Precision Building Design Associates Ltd.

This home will be designed and built to comply with BC Building Code 2006 edition





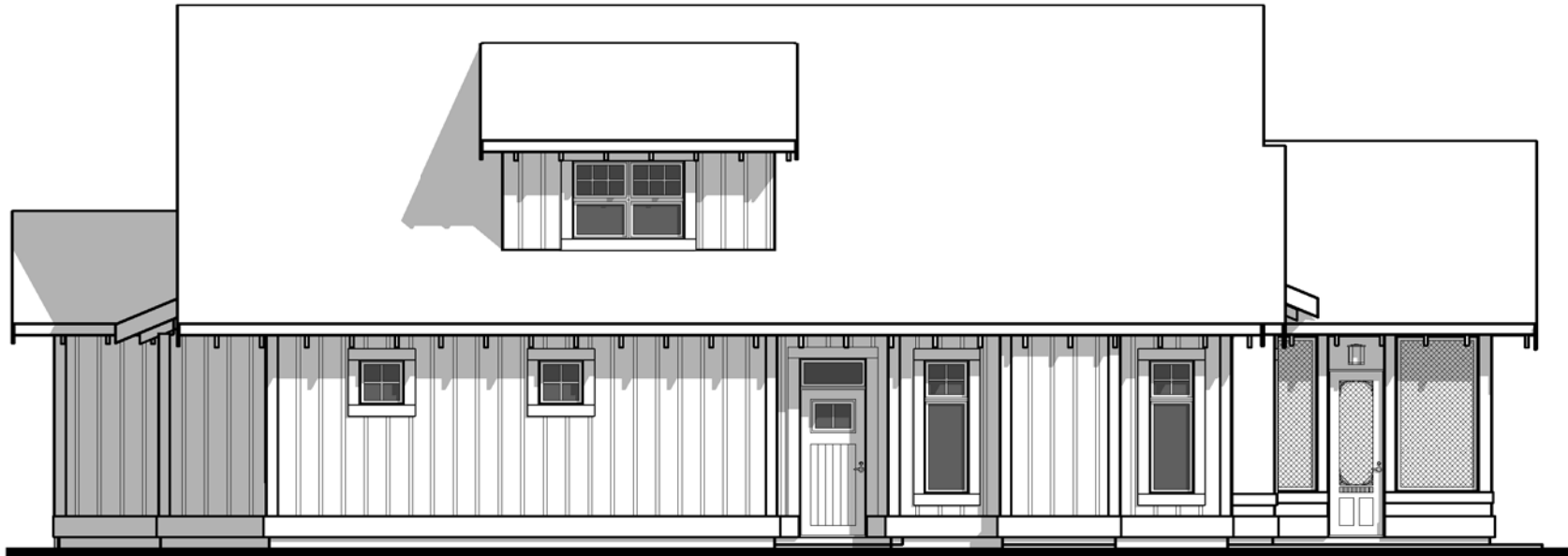
**FRONT ELEVATION**



**RH SIDE ELEVATION**



**REAR ELEVATION**



**LH SIDE ELEVATION**



**the cottages**  
ON OSOYOOO LAKE

unit number:  
**000**

unit style:  
**Ambrosia**  
drawings prepared by:  
**Precision Building Design Associates**  
Chilliwack, B.C. (604) 792-0826

color scheme:  
**Scheme - ?**  
date:  
**October 18, 2016**  
scale:  
**1/8" = 1'-0"**



**van maren**  
GROUP OF COMPANIES

-Drawings are subject to change without notice. The developer reserves the to make modifications to the drawings at their sole discretion in accordance with building code guidelines and to maintain the high quality of the homes.  
-Window sizes are subject to change from site to site based on site limiting distance calculations.  
-Drawings to be read in conjunction with structural drawings by VanDenBrink Engineering LTD.  
-These drawings are based on the original drawings and details created by Rositch Hemphill Architects, and have been subsequently modified and/or reformatted by Precision Building Design Associates Ltd.